



1st Meeting of the
**European Rural Networks'
Steering Group**

Brussels - 25 February 2015

(Self-)assessment of European rural networks

Key issues & challenges

Edina Ocsko – ENRD Contact Point



European Network for
Rural Development



eip-agri
AGRICULTURE & INNOVATION

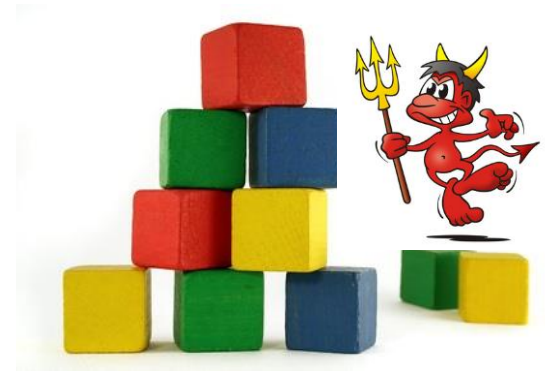


What do we assess?

- European and national rural **networks** (and ‘networking’) **are tools** (not end results)
- Networks need to be assessed against the improvement made in the rural development policy context:
 - ✓ Increased stakeholder involvement in RD implementation
 - ✓ Improved quality of RDPs
 - ✓ Broader public better informed on RDP benefits
 - ✓ Improved RDP evaluation



Building a logic



- Overall objectives are broad...
 ...**The devil is in the details...**
- Breaking down of overall objectives in a meaningful way & creating **clear links - logic** (specific objectives, activities...)
- Reaching outputs and **results/(impact)** at the end

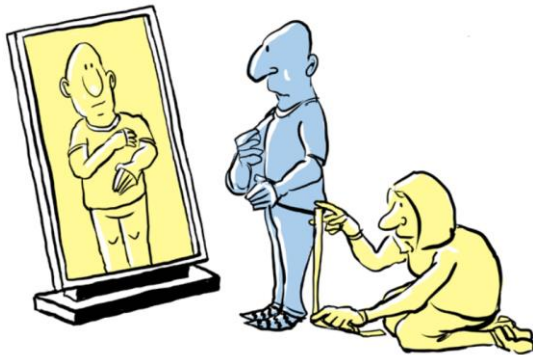
What are the effects?

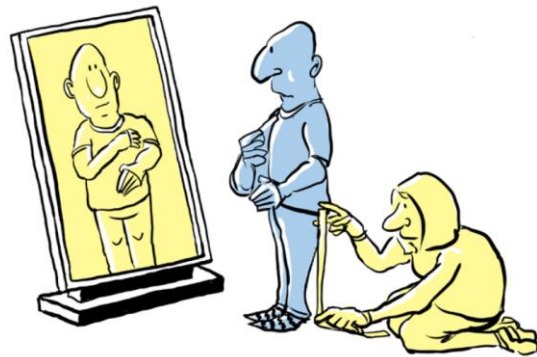
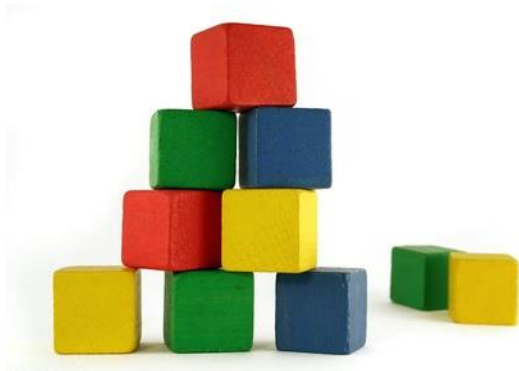


- Outputs are important (level/No of participants at events, No of thematic groups, No of good practices, etc. & other indicators)
- ...**Results/ impact** in the rural development context (RDPs & wider) are even more important...
- *Example*: ENRD work on ‘stakeholder involvement’...
 - identifying areas where networking can make a change in rural development policy

Assessing results: how & why?

- Identifying the right indicators ('relevance & usefulness') – realistic to 'measure'
- The intervention logic is an important starting point
- On-going assessment is for **continuous reflection & improvement**





Thank you.