

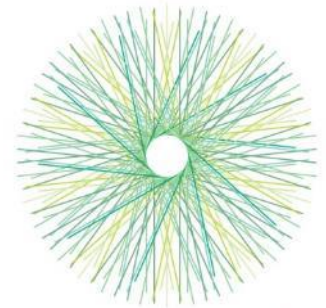


Increasing farm income and resilience through imaginative and targeted RDP programming

The European Innovation Partnership “Agricultural Productivity and Sustainability”

**Sirpa Karjalainen, DG AGRI / B2
Brussels 29.03.2017**

EIP-AGRI in a nutshell



eip-agri
AGRICULTURE & INNOVATION

Aim: To foster a **competitive and sustainable** agriculture and forestry sector that "achieves **more from less**". "**Idea or invention put into practice with success**".

Approach: Closing the innovation gap between research and practice by:

- using the **interactive innovation** model:
 - Operational Groups (RDP 30 K till 1000 K / OG)
 - Multi-Actor projects (H2020 "research" 2 -10 mio € / project)
 - Thematic networks (H2020 "coordination" 2 mio € / network project)
- **linking** innovations and actors via the EIP-AGRI Network
 - EIP-AGRI web pages, contacts, practice abstracts...



funded by



Operational Groups



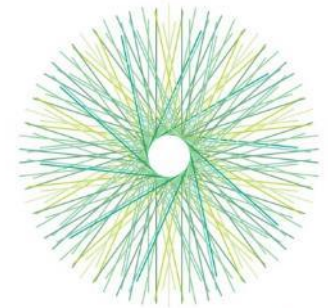
In the leaflet you find information about:

- Setting up an Operational Group
- 4 Operational Groups.
About 100 OG are now presented in the EIP-AGRI website and more is coming every day)
- Useful links and connections

TWO EXAMPLES:

Winter harvest (AU)
InnoBau (DE)

Winter Harvest (AU)

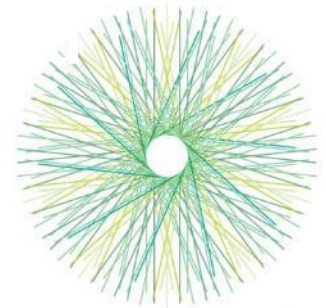


eip-agri
AGRICULTURE & INNOVATION

Starting point / problem definition:

- *The **availability and variety** of winter vegetables is **relatively small***
- ***Consumers know little about winter vegetables** and prefer a small range of vegetable species*
- *Glass houses are energy-intensive, **customers** are increasingly **opposed to this type of cultivation** : expensive, ecological reason*
- ***Poly Tunnels are not used in winter**, no production in the tunnels*
- ***Underemployment** during the winter season*

Winter Harvest: Seasonal, energy-extensive and innovative vegetable production



eip-agri
AGRICULTURE & INNOVATION

Innovative solutions for the establishment of organic winter vegetables cultivation in Austria

Project Highlights:

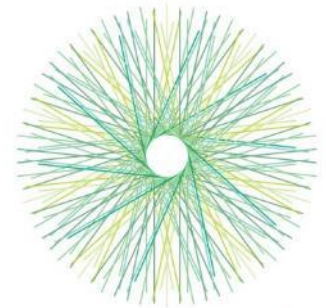
Find new ways of growing winter vegetables

Technological part:

- *Find **New techniques** –improve existing cultivation systems*
- *Using the existing **varieties***
- ***Increase profitability of production** for the producers*

Marketing:

- *Develop methods to improve the **communication** between producers and consumers*
- *Develop a "**winter vegetable language**"*
- *Optimize the **packaging***



Winter Harvest:

- **Achieve added value for producers in winter**
- **Reduce the risks** for producers
- select **suitable varieties** for the cultivation and retail
- Find the **optimal cultivation-period**
- Develop optimal working and production **processes**

- **Actions/methods for a better marketing**
- **Increasing customer demand**
- providing **information** on the product
- optimize **packaging** for the product
- Using **trends** towards ecological packaging
- **Carbon footprint**

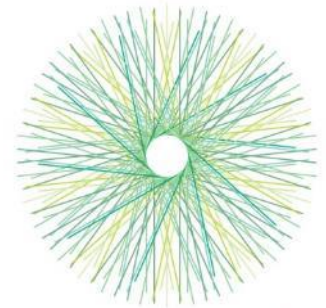


InnoBau

(Schleswig-Holstein, DE)



Agricultural construction with a systemic decision-making process



eip-agri
AGRICULTURE & INNOVATION

The aim of the OG “**InnoBau**” is to support sustainable innovation in agricultural construction with a new, systematic decision-making process.

- To **develop and test** with participating companies a **tool for a systematic planning management**, which is suitable in practice.
- The planning is supported on **real agricultural construction projects** for livestock in conventional and organic production.



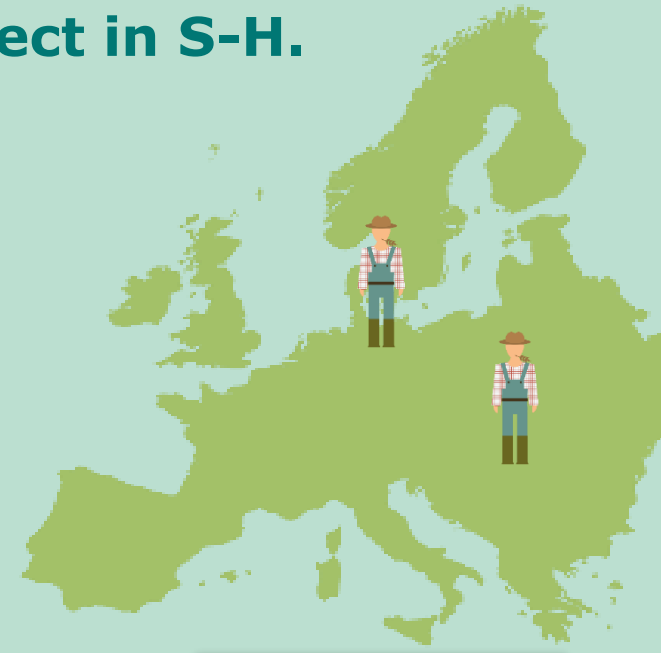
- *The process of intensive planning is based on assessment criteria and sub-criteria for **sustainable animal housing systems**, which were so far only applied in an elective module.*
- *University of Applied Science Kiel.*
- *Novel ideas for animal housing systems should be assessed in practice to ecological, economic and social sustainability already during the planning phase.*

17 farmers as partners of the project in S-H.



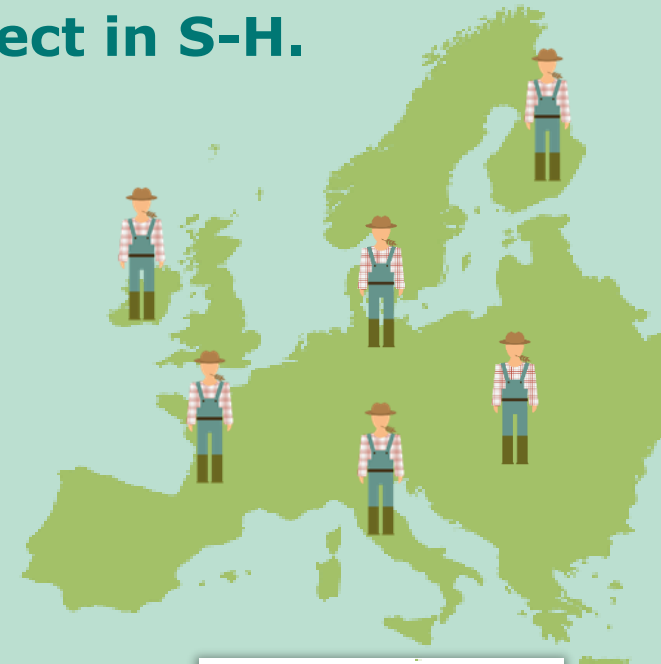
- *The process of intensive planning is based on assessment criteria and sub-criteria for sustainable animal housing systems, which were so far only applied in an elective module.*
- *University of Applied Science Kiel.*
- *Novel ideas for animal housing systems should be assessed in practice to ecological, economic and social sustainability already during the planning phase.*

17 farmers as partners of the project in S-H.



- *The process of intensive planning is based on assessment criteria and sub-criteria for sustainable animal housing systems, which were so far only applied in an elective module.*
- *University of Applied Science Kiel.*
- *Novel ideas for animal housing systems should be assessed in practice to ecological, economic and social sustainability already during the planning phase.*

17 farmers as the partners of the project in S-H.



Bridging agriculture, research, and much more.....



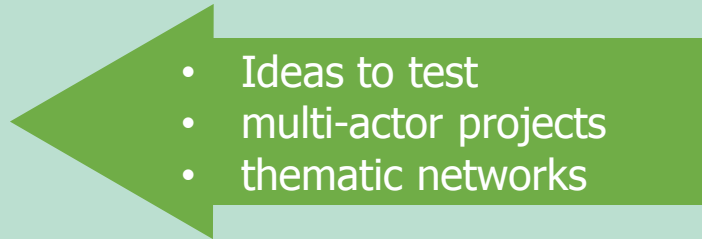
3200 OGs are planned in 26 Member States in 2014-2020, with activities such as the development of **new products or practices, technology, pilot projects, supply chain cooperation, joint environmental projects** or climate change actions, cooperation in biomass provision or **renewable energy, forest management** and much more



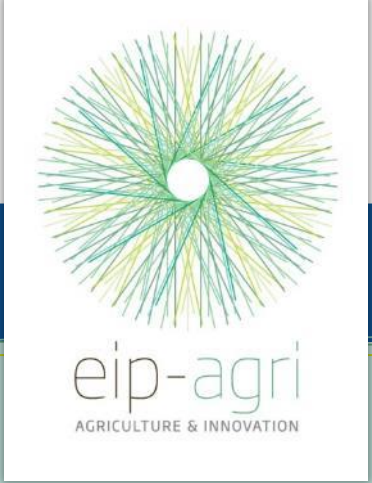
Farming
Forestry
Agribusiness
...



Research



Getting an Operational Group started



1 IDENTIFY YOUR IDEA OR PROBLEM

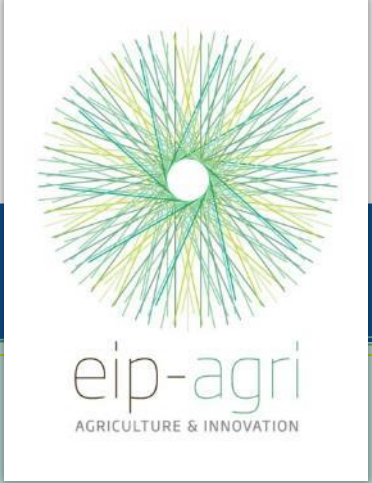
2 DESIGN THE PROCES TO TEST THE IDEA OR SOLVE THE PROBLEM

3 FIND THE RIGHT PARTNERS TO MAKE IT WORK

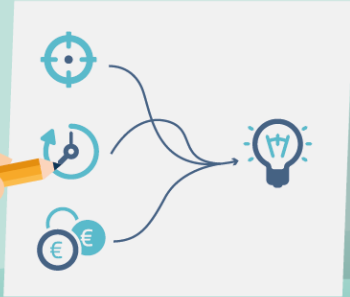


There could be already an OG working with this problem?

Getting an Operational Group started



4 BUILD A ROAD MAP WITH GOALS, TIMING BUDGET ETC.



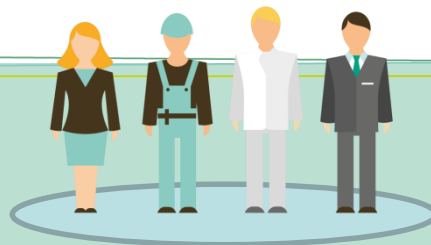
5 FIND FUNDING & SEND IN THE APPLICATION



INNOVATION SUPPORT SERVICES, AT YOUR SERVICE!



Means to implement the EIP-AGRI



Rural Development Programmes

- **Operational Groups**
 - Setting up of the group
 - Financing of the project
- **Other innovation project funding under M16**
(2,8 bill € / 15 000 project)
- **Innovation support services / innovation brokers**

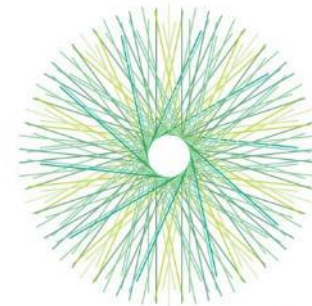
National or Regional Rural Network

EIP-AGRI Network
EIP-AGRI web pages

Horizon 2020 (EU Research Policy)

- **Multi-actor research projects** involving the agricultural community
- **Thematic networks**, unlocking and exchanging knowledge across the EU

www.eip-agri.eu the one-stop-shop for agricultural innovation



eip-agri
AGRICULTURE & INNOVATION



Spread
the results



SHARE WITH US



SEARCH AND FIND



FOCUS ON



DEEPEN YOUR KNOWLEDGE



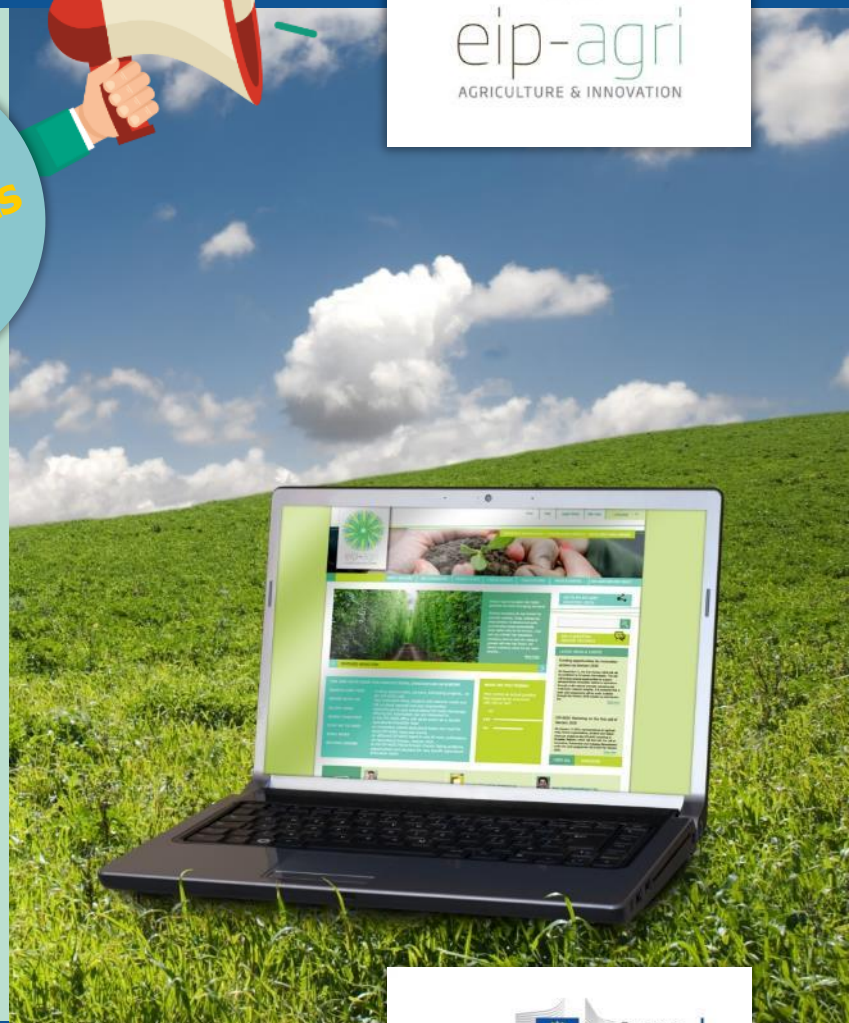
STAY UP TO DATE



MY EIP-AGRI

For more
information:

www.eip-agri.eu



funded by

