

# Environmental Co-operation Action Fund (16.5)

Jonathan MacLure & Neil Henderson  
Scottish Government



# Ambitious “New Approach”

An aerial photograph of a river valley. The river winds through the center of the valley, surrounded by green fields and patches of brown, possibly forested or rocky, land. The background shows rolling hills and mountains under a cloudy sky.

Many environmental land management objectives are delivered most effectively at a **landscape scale**

Typically requires an external **facilitator** to oversee co-operation across multiple holdings

Using new measure 16.5, designing a new approach in Scotland

# Ambition

An aerial photograph of a valley with a winding river, green fields, and mountains in the background. The sky is blue with some clouds.

Co-ordinated & targeted AECS tackling priority areas, at an “appropriate” landscape scale

Engaging with land managers

Good quality & targeted advice (specialists with experience)

Award facilitation money to “good quality” and feasible environmental projects, delivering Value for Money

Knowledge transfer

Environmental planning & monitoring

# Paying for Facilitation

Facilitation costs (up to £300 per day) + actual costs (venue hire, publicity, surveys)

## Phase 1

- Engaging participation
- Preparing a landscape-scale management plan
- Preparing individual holding plans

## Phase 2

- Overseeing and adding value to project delivery
- Reporting and monitoring

Does not support the costs of on-the-ground delivery, which is via AECS

Beneficiaries: Individuals & organisations

Contracts: 2-5 years



**The Scottish Government**  
Riaghaltas na h-Alba

# Eligibility

Project must deliver:

- one of the **priorities**
- **additionality**

Project area must:

- include **at least 2 holdings**
- represent an **appropriate minimum spatial scale**
- be located within the relevant **AECS target areas**



# Assessment

One **Priority**

**Effective co-operative action**

**Additionality**

**Value for money**

**Feasibility**

**Knowledge and expertise**



**The Scottish Government**  
Riaghaltas na h-Alba

**Habitat  
Restoration**

**Vulnerable  
Priority  
Species  
(VPS)**

# 2020 Challenge for Scotland's Biodiversity



**Invasive  
Non-native  
Plant Species (INNS)**

**Deer  
Management**



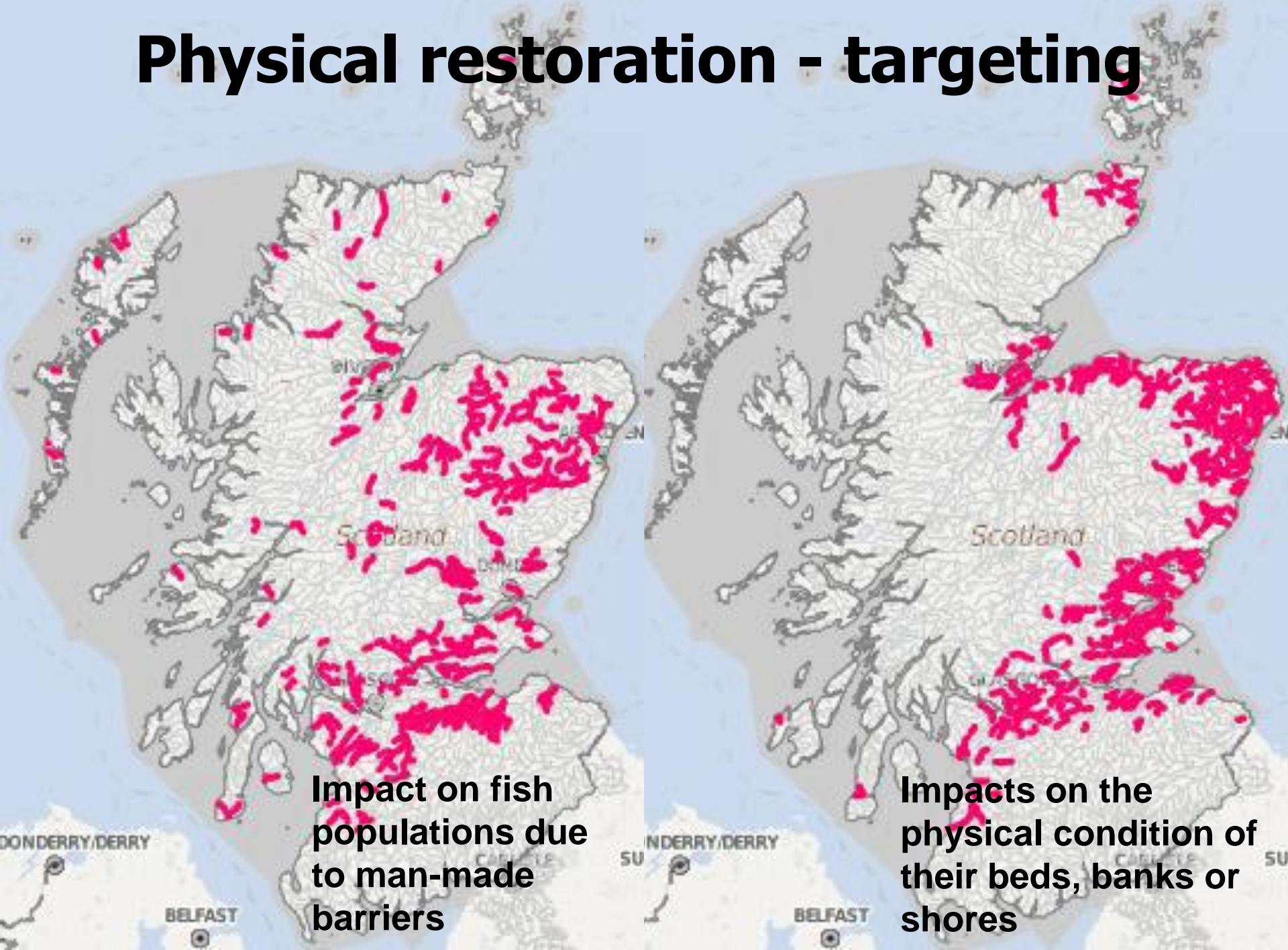
**Physical restoration of water bodies**

**Natural flood management**

**Catchment management for water quality**



# Physical restoration - targeting



**Impact on fish populations due to man-made barriers**

**Impacts on the physical condition of their beds, banks or shores**



Before

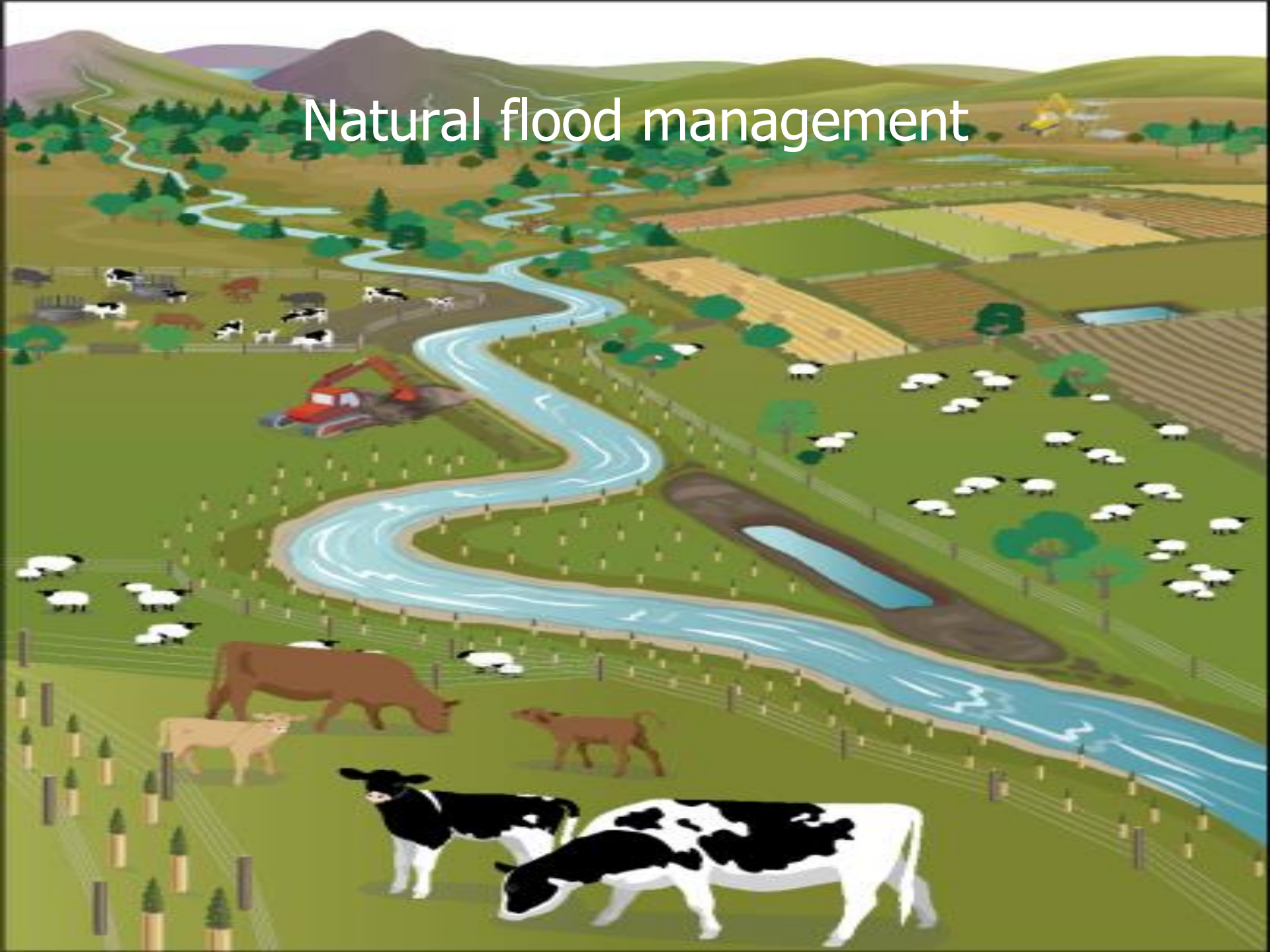


During  
construction



After the first flood

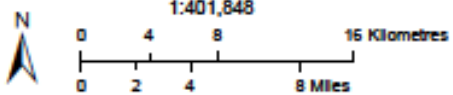
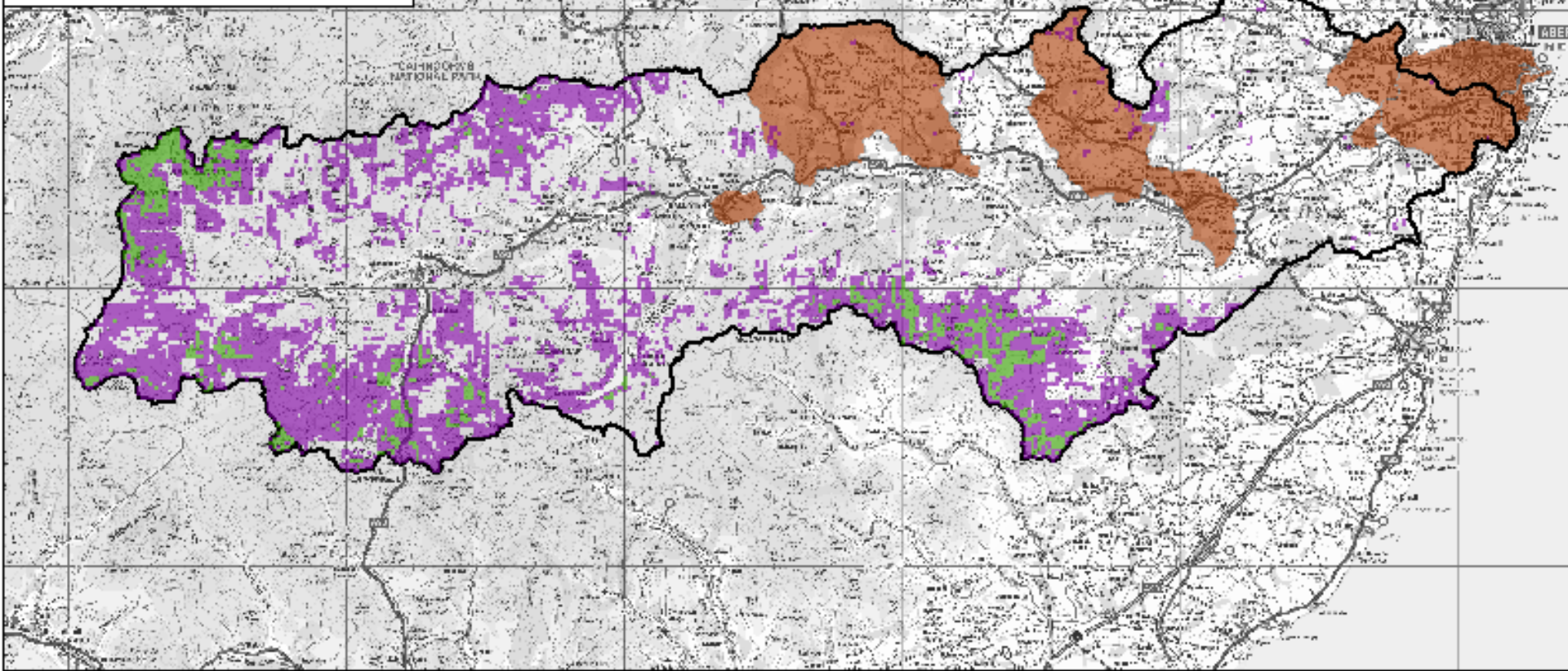
# Natural flood management



**Legend**

**Opportunity Areas for Runoff Reduction**

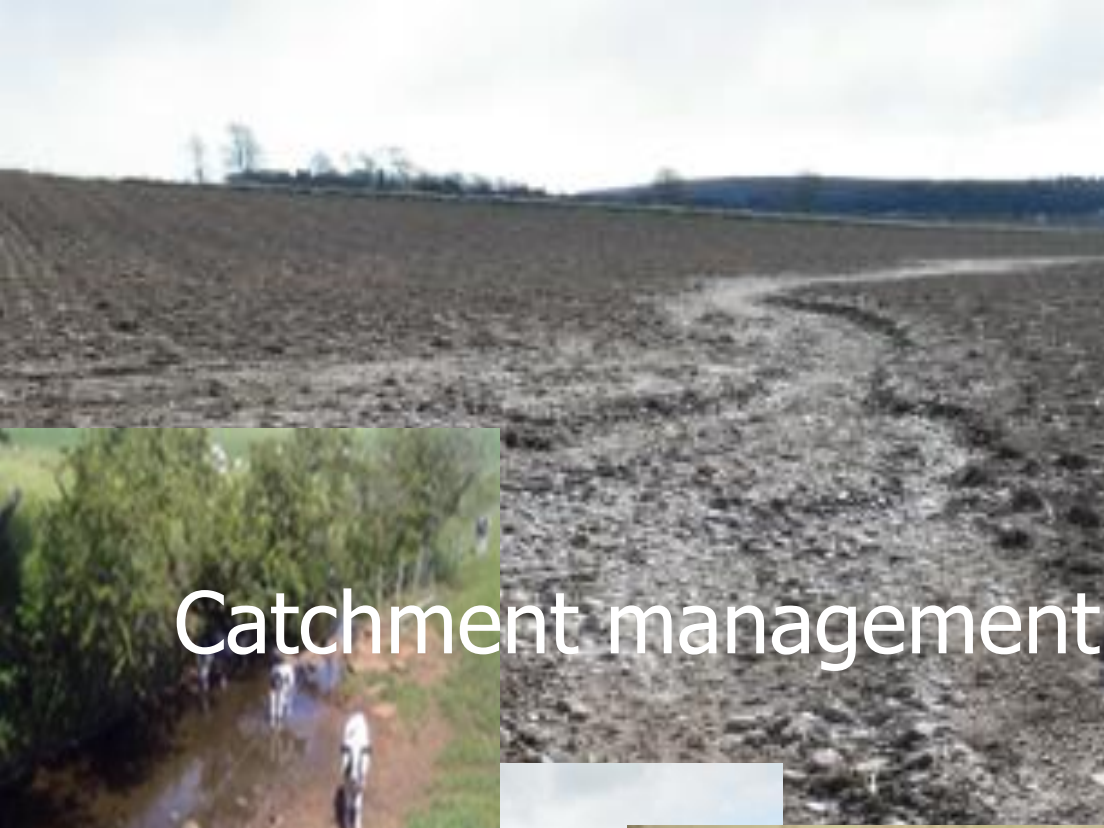
- Medium Potential
- High Potential
- Potentially Vulnerable Areas
- River Dee Catchment



# Opportunity areas for runoff reduction Dee Catchment



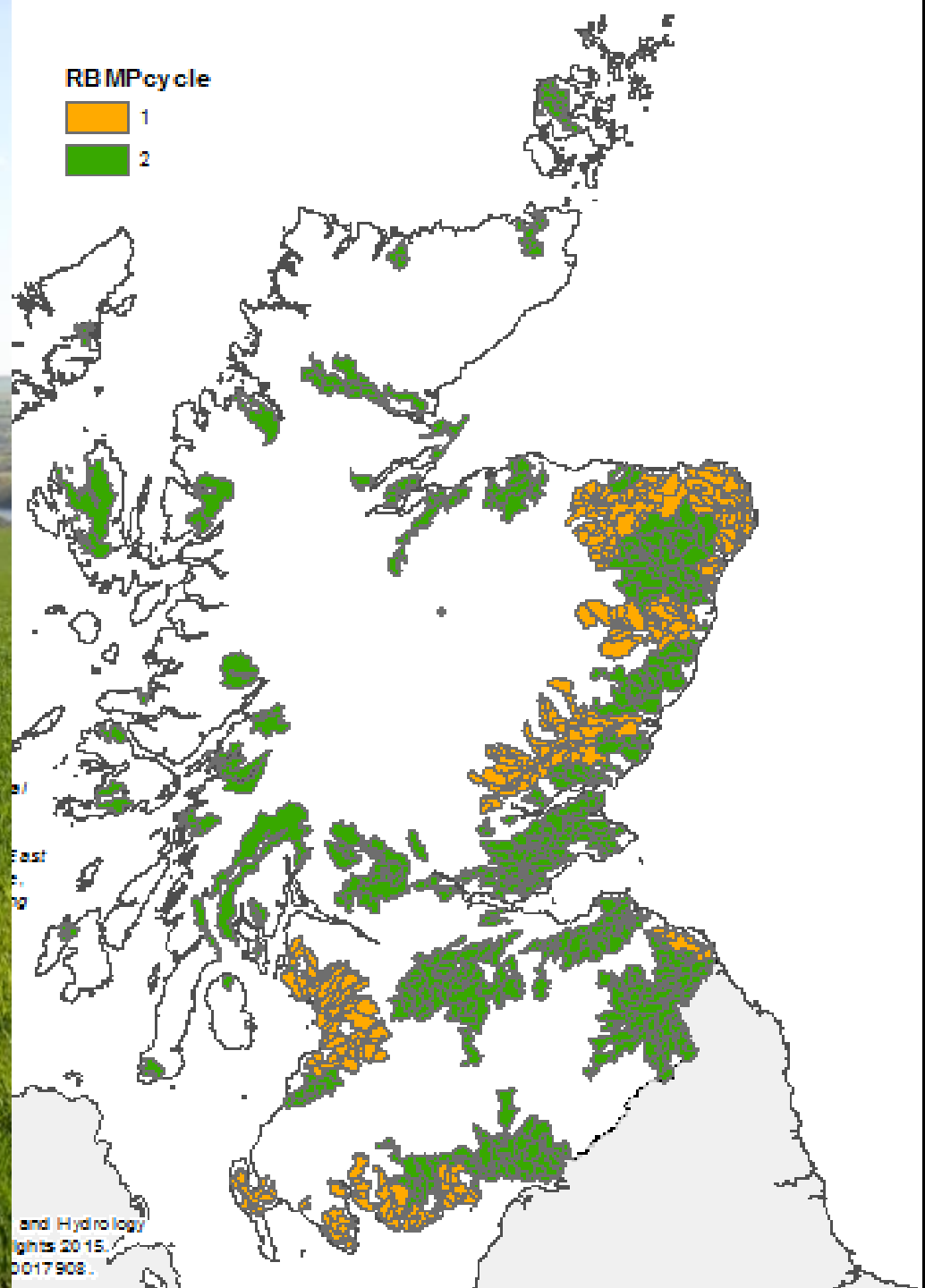
© 2006 Scottish Environment Protection Agency. Some features of this map are based on digital spatial data licenced from the Centre for Ecology and Hydrology, © CEH. Includes material based upon Ordnance Survey mapping with permission of H.M. Stationary Office, © Crown Copyright. Licence number 100020536.  
Helpdeskref: NIA. Produced: 29/11/2006



# Catchment management for water quality



# Diffuse pollution priority areas





# Woodland Creation

100,000 ha target by 2022

Woodland Expansion Advisory  
Group (WEAG)

60% productive woodland

Contribution to CO2 emissions  
reduction target



# Challenges

An aerial photograph of a large, deep blue lake with numerous islands and peninsulas. In the background, there are mountains with patches of snow under a clear sky. The foreground shows a patchwork of green and brown fields, likely agricultural land, with some small buildings and roads.

New Scheme

Ambition v administration

Multiple benefits & facilitators

Assessment review (eligibility Y/N, simplify, additionality, VfM)

Links with AECS, and other funds (eg. LEADER, EIP, Structural Fund)



# Questions

**What's the best way to pay for professional facilitator time?  
(eg standard / actual costs, professional time as % of  
project value, Full Time Equivalent (FTE))**

**What are the best ways to assess value for money,  
additionality and establishing a framework of reasonable  
costs?**

**Is it appropriate for “applicants to apply for their own  
work?”**

An aerial photograph of a valley with a winding river, green fields, and mountains in the background. The text "Any questions?" is overlaid in large white font.

# Any questions?

<https://www.ruralpayments.org/publicsite/futures/topics/all-schemes/environmental-co-operation-action-fund/environmental-co-operation-action-fund-full-scheme-guidance/>