

# The bioeconomy in France and in some regions

## *The Grand Est region example*

*ENRD – Brussels - January 17th, 2019*

# A bioeconomy strategy for France



Elaboration of the strategy in January 2017 then developed into a concrete action plan in February 2018

## Main key issues :

- Producing more bioresources sustainably and using them.
- Making bioeconomy products a market reality.
- Supporting the transition to a high-performance, innovative and sustainable biobased industry.
- Sharing bioeconomy with stakeholders, including society.

# Regional bioeconomy strategies

Some regions are working on strategies.



Regional bioeconomy conference in April 2018



Regional bioeconomy conference in June 2018



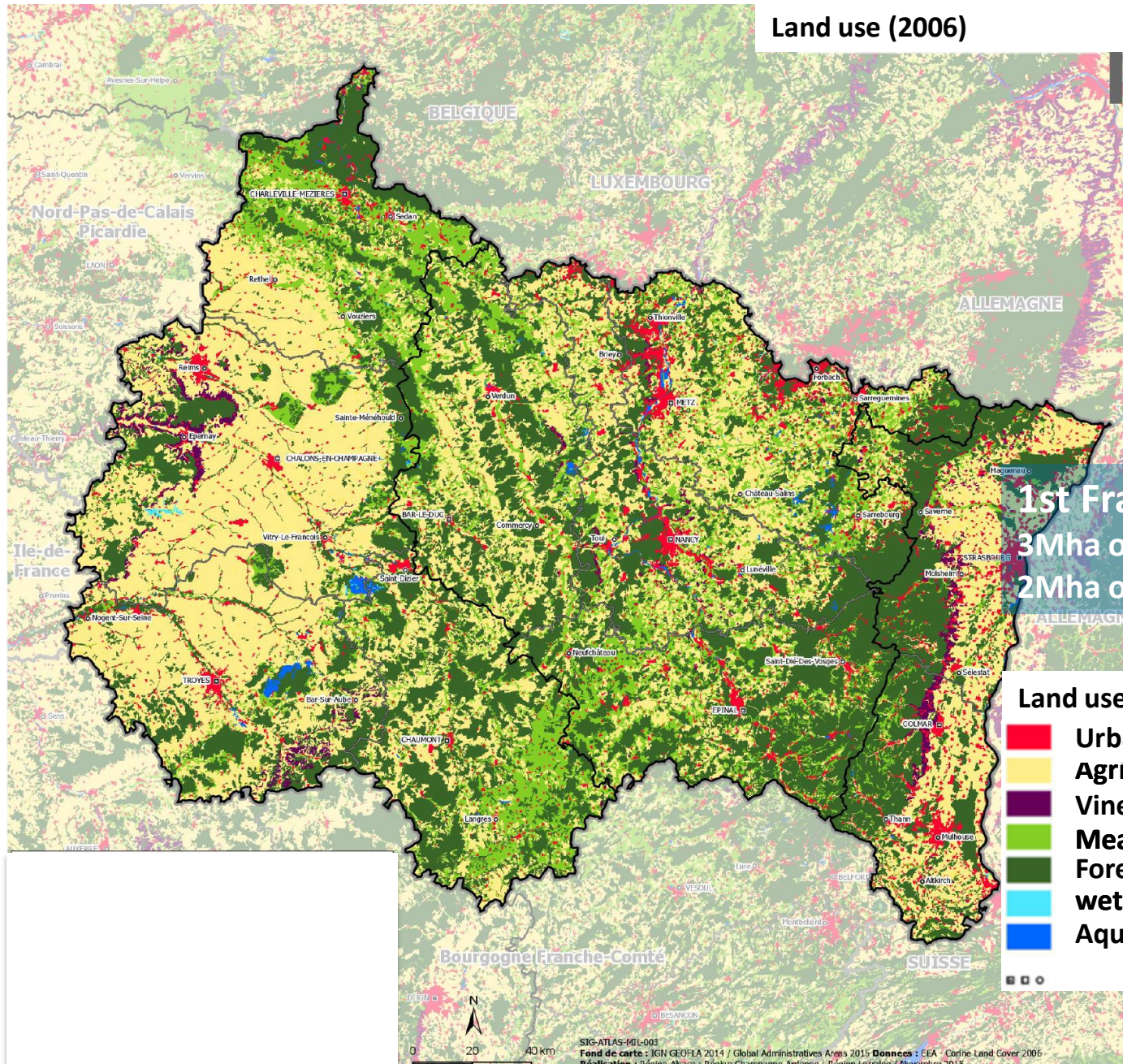


# Bioeconomy

*Make Grand Est a European leader in  
Bioeconomy*

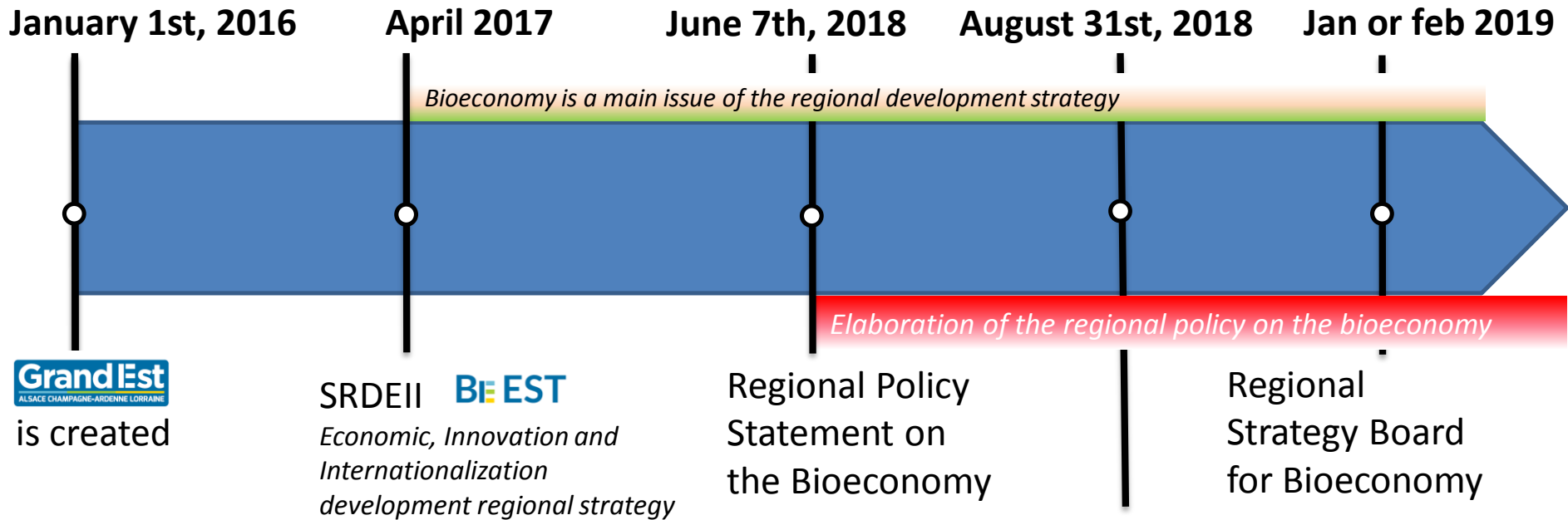
**Land use (2006)**

**Context**



**1st France agricultural region**  
3Mha of agricultural area  
2Mha of forest

- Land use**
- Urbanized area
  - Agricultural areas (without meadows)
  - Vineyards & orchards
  - Meadow, lawn, moors
  - Forests
  - wet areas
  - Aquatic environments



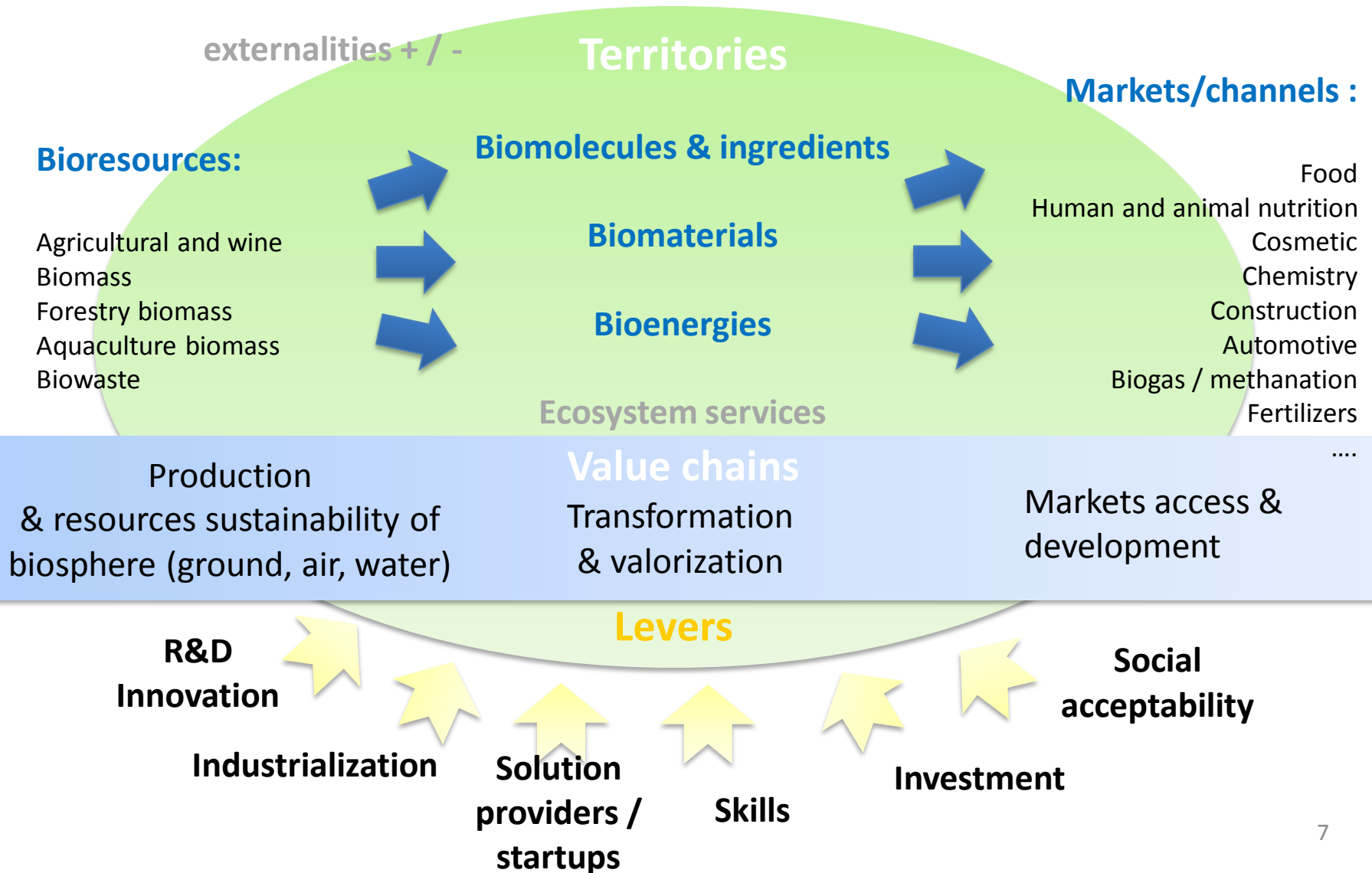
## The main five issues for regional bioeconomy strategy

- Governance
- Sustainable production
- Competitiveness
- Start Up development
- Grand Est Attractiveness

## BioPacte = 3 France's regions Partnership



# Regional strategy : dynamic in progress



# Instruments supporting bioeconomy



- *Communicate*
- *Exchange between actors*
- *Regional board for bioeconomy*



- *Develop knowledge (training & research)*
- *Set objectives*
- *Encourage initiatives*



- *European funds (EAFRD : measure 6.4 of the RDP, EIP-Agri)*
- *National funds*
- *Regional credits*



# Example 1 : European pole of hemp



Grand Est region : 1st European region  
producing hemp

6 500 ha / 40 000 tons

A European pole of hemp to :

- Gather hemp value chain stakeholders

23k€ regional funds, 99k€ EAFRD for EIP-Agri (M16.1)

A support >500k€ asked for EIP-Agri (M16.2)

- Improve hemp valorization and competitiveness

→ A full branch of bioeconomy

## Example 2 : Biogas plant



Grand Est : 1st France Region in  
number of agricultural biogas plant  
95 in Grand Est / 382 in France

- 45% of the national energy agency (ADEME) methanisation's fund
- 
- 74 projects supported with 15,53 M€ from european funds

EAFRD 5,23 M€ / 10,3 M€ ERDF

**→ The first operative bioeconomy regional policy**

## Région **Grand Est**

Siège de la Région • 1 place Adrien Zeller  
BP 91006 • F 67070 Strasbourg Cedex  
Tél. 03 88 15 68 67 • Fax 03 88 15 68 15

Hôtel de Région • 5 rue de Jéricho  
CS 70441 • F 51037 Châlons-en-Champagne Cedex  
Tél. 03 26 70 31 31 • Fax 03 26 70 31 61

Hôtel de Région • Place Gabriel Hocquard  
CS 81004 • F 57036 Metz Cedex 1  
Tél. 03 87 33 60 00 • Fax 03 87 32 89 33

**[www.grandest.fr](http://www.grandest.fr)**