



Scaling up mitigation in French livestock sector

Jean Baptiste Dollé

Institut de l'Élevage – French Livestock Institute

Wednesday 11th December

Bioeconomy and Climate Action in rural areas

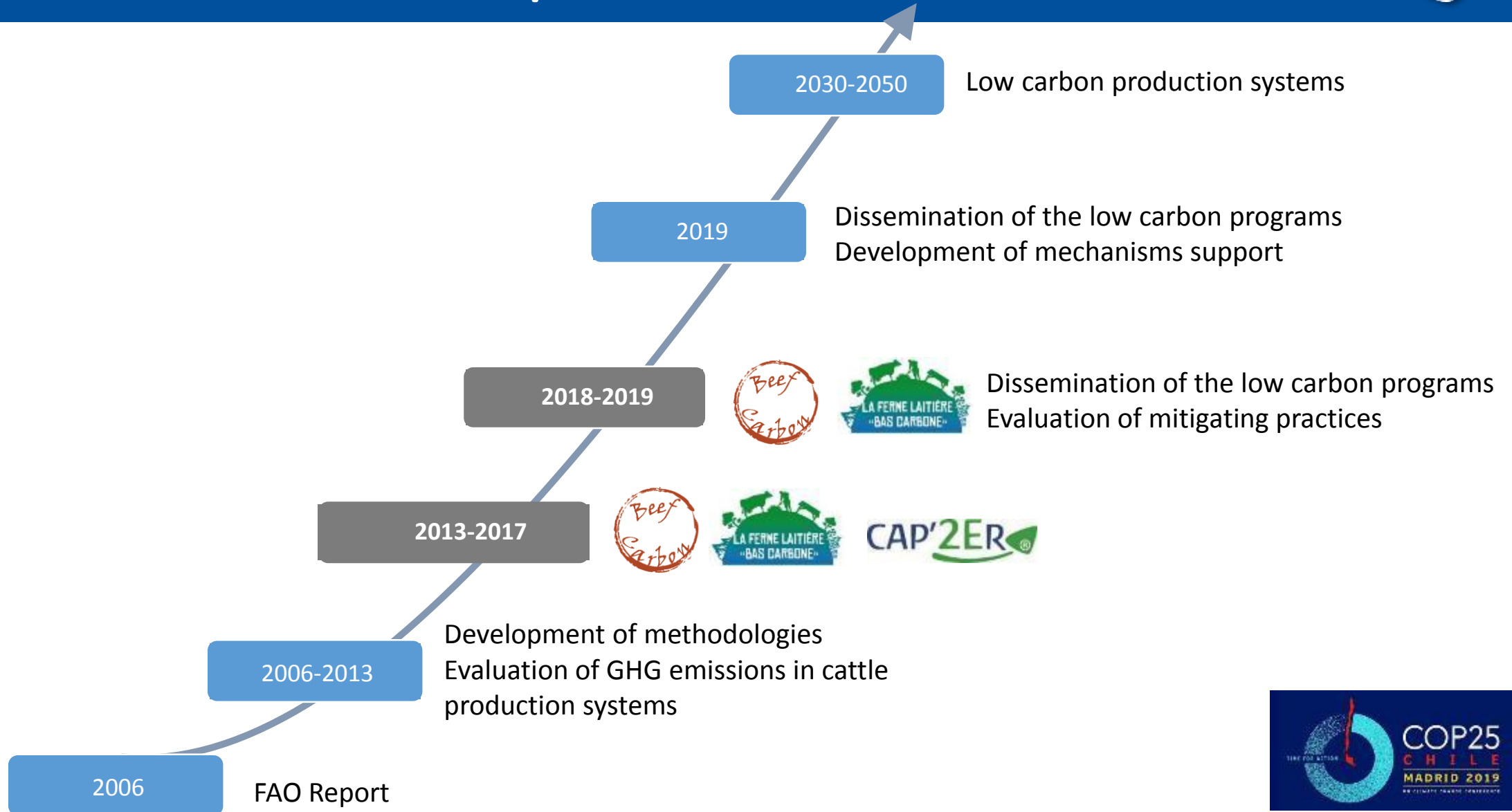


Outline

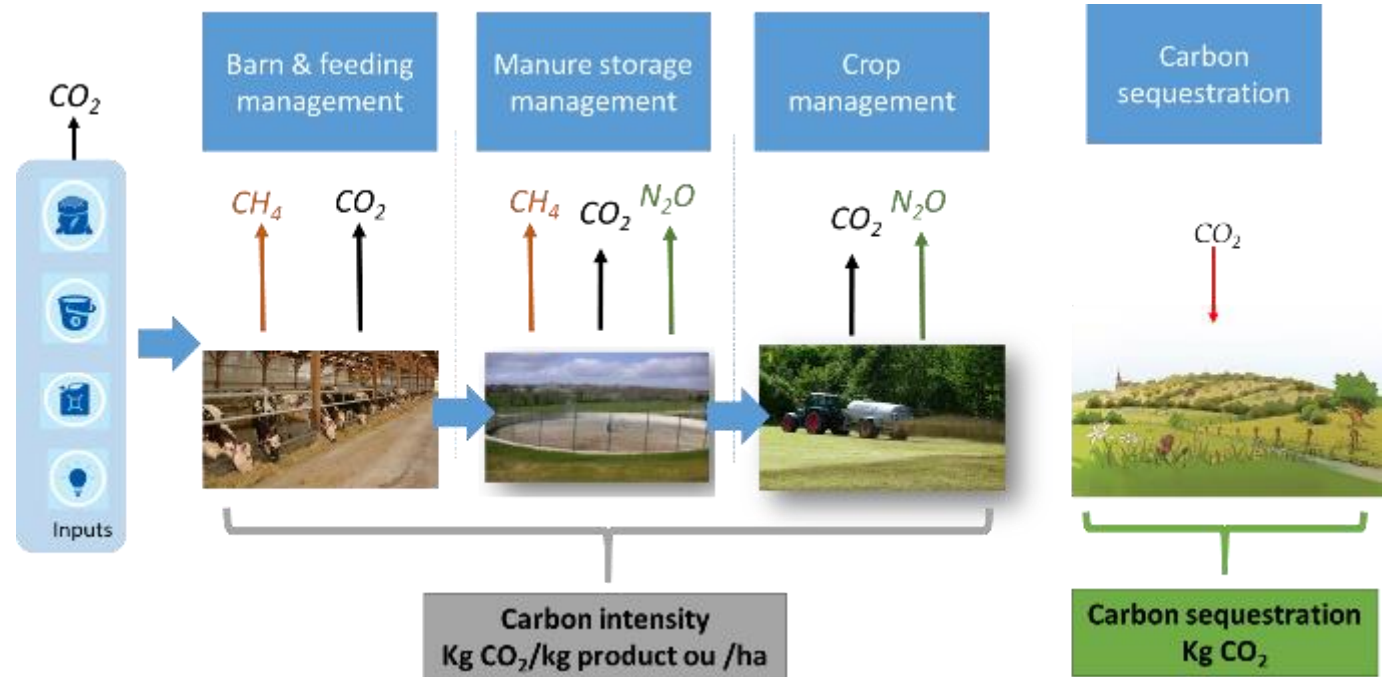
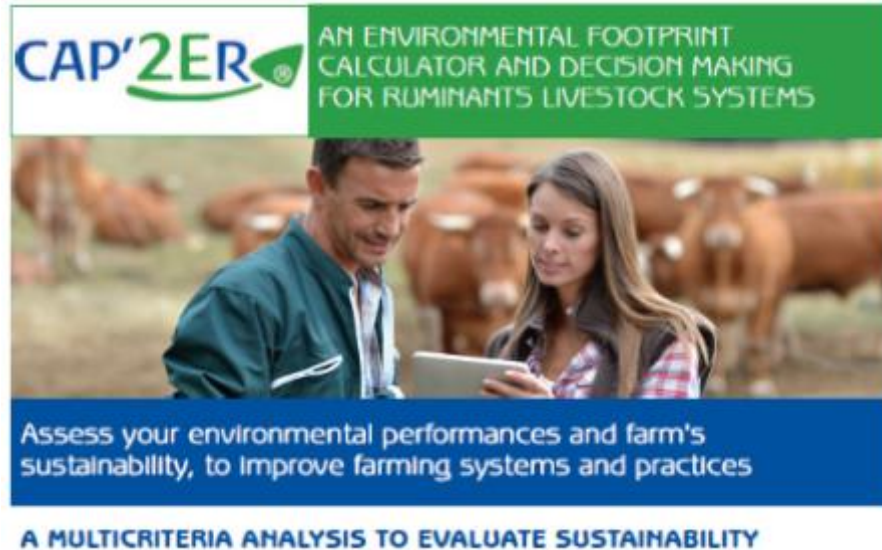


- **Context of the low carbon initiatives in French cattle farms**
- **How cattle farmers are applying mitigation practices ?**
- **Which initiatives are developed for disseminating practices ?**
- **What are the conditions for upscaling ?**
- **What institutions are involved and what are their roles ?**
- **Transferability issues ?**

Context : Toward a low carbon and sustainable cattle production in France



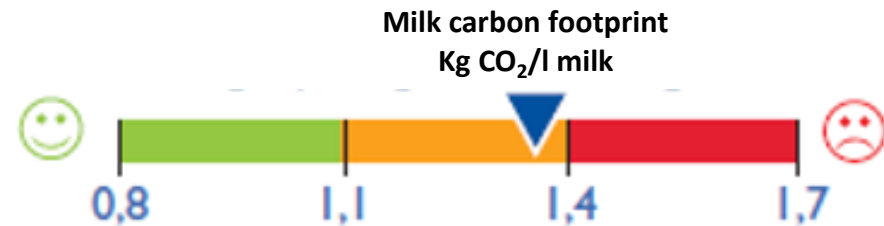
First, an audit for identifying best practices and potential gains



Methodology: In accordance with main guidelines



Certified by Ecocert

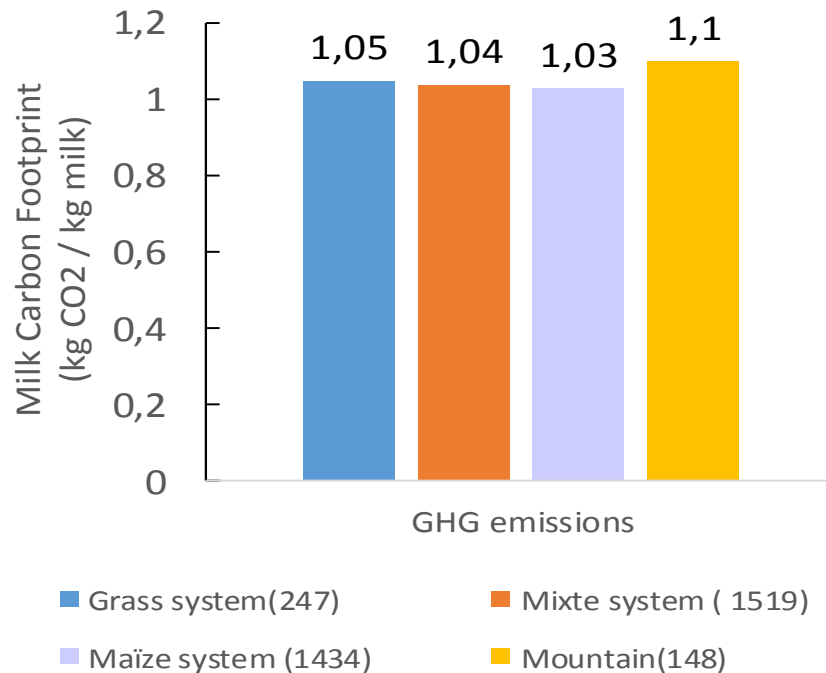




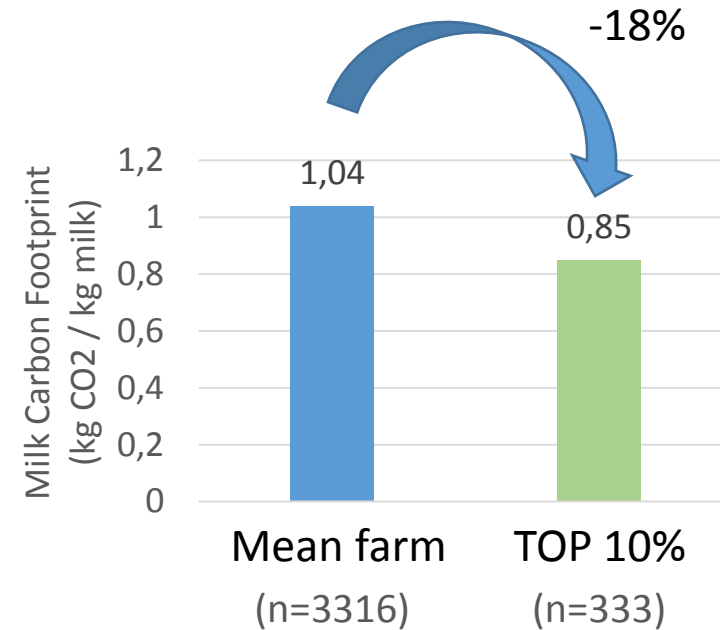
GHG emissions and carbon footprint



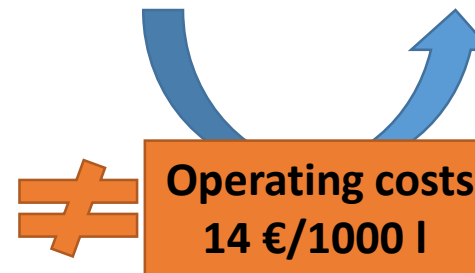
- No difference between production systems...
- but high difference between efficient and less efficient farms



3 316 dairy farms

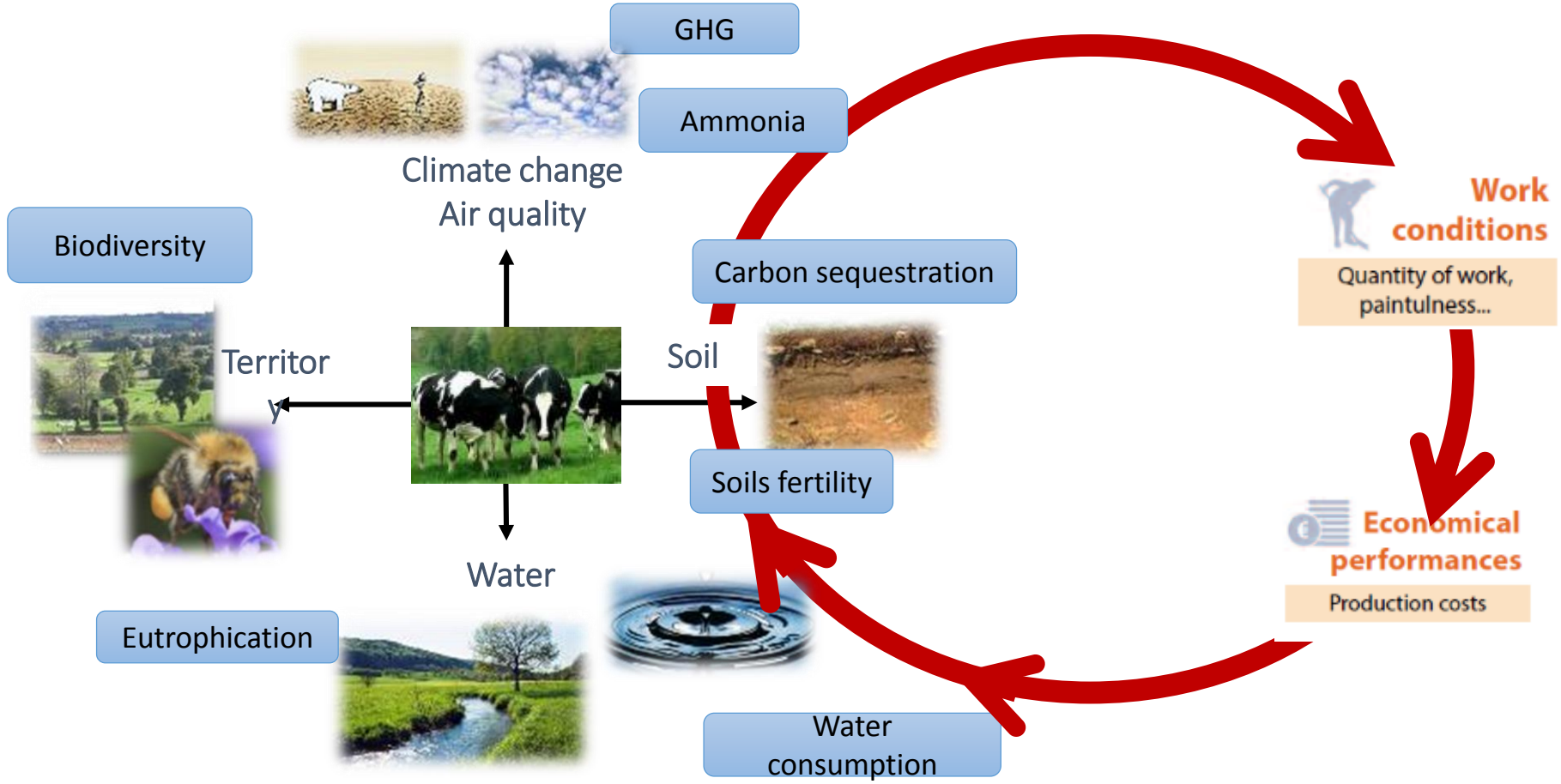


	Mean	TOP 10%
Carbon footprint kg CO ₂ /l FPCM	1.04	0.85
Milk yield, liter FPCM/cow/year	7,490	8,220
Age at first calving, months	29	28
Concentrate rate, g/l milk	166	146
N-fertilizer use, kg N/ha	145	122



Economic & environmental efficiencies → a driver for applying mitigation practices

From GHG accounting to the SDGs



More than 40 mitigations practices

GHG emissions



Inputs

Pasture management,
Concentrates and fertilizers,
Legumes, Crops rotation



Fuel and electricity

No-till cultivation,
Power and equipment,
Working organization



Crops management & fertilization

Legume fodder crops,
Optimization of fertilizers uses



Herd management

Increasing productivity
Reducing number of unproductive
animals



Feed

Feed efficiency,
Forage quality and yield



Manure management

Time spent in shed vs pasture,
Biogas production



Carbon sequestration


Cover crops


Introduce more
intermediate crops,
more row intercropping
and more
grass strips


Avoid bare soil


Never leave
soil bare
and work it less,
for example by
using no-till methods

Agroforestry


Add to the
hedges at field
boundaries
and develop
agroforestry

Grassland management


Optimize
pasture management
- with longer
grazing periods,
for example

French initiatives for reducing carbon intensity and disseminating practices



Target : Reducing by 15 to 20 % the carbon footprint

□ LOW CARBON DAIRY FARM



□ BEEF CARBON



□ GREEN SHEEP



□ UNDER DEVELOPMENT IN GOAT, CROPS FARMS, POULTRY, EQUINE

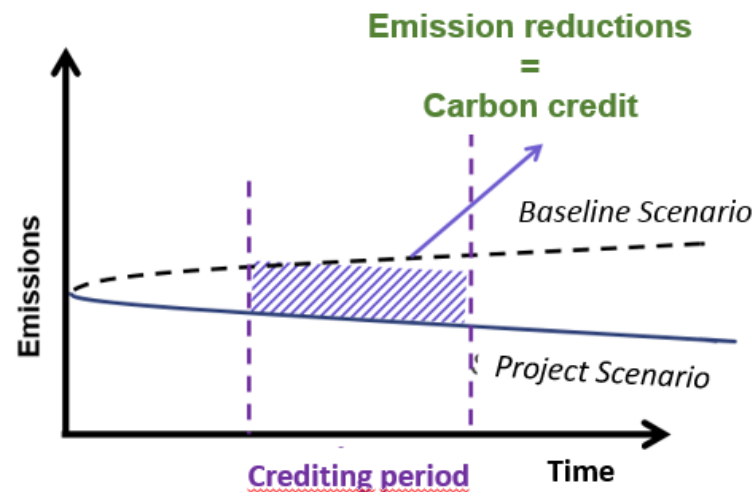
Institutions involved and the partnership



Mechanisms for supporting the implementation and the transition



- CAP
 - Agri Environment measures
 - Eco-Scheme
- Payments for ecosystem services
- Carbon finance (private and public funds)



CARBON AGRI



- Scope concerns cattle and crop productions
- A methodology approved by the French Ministry of Ecological Transition



RÉPUBLIQUE FRANÇAISE

Ministère de la transition écologique et
solidaire



Direction générale de l'énergie et du climat

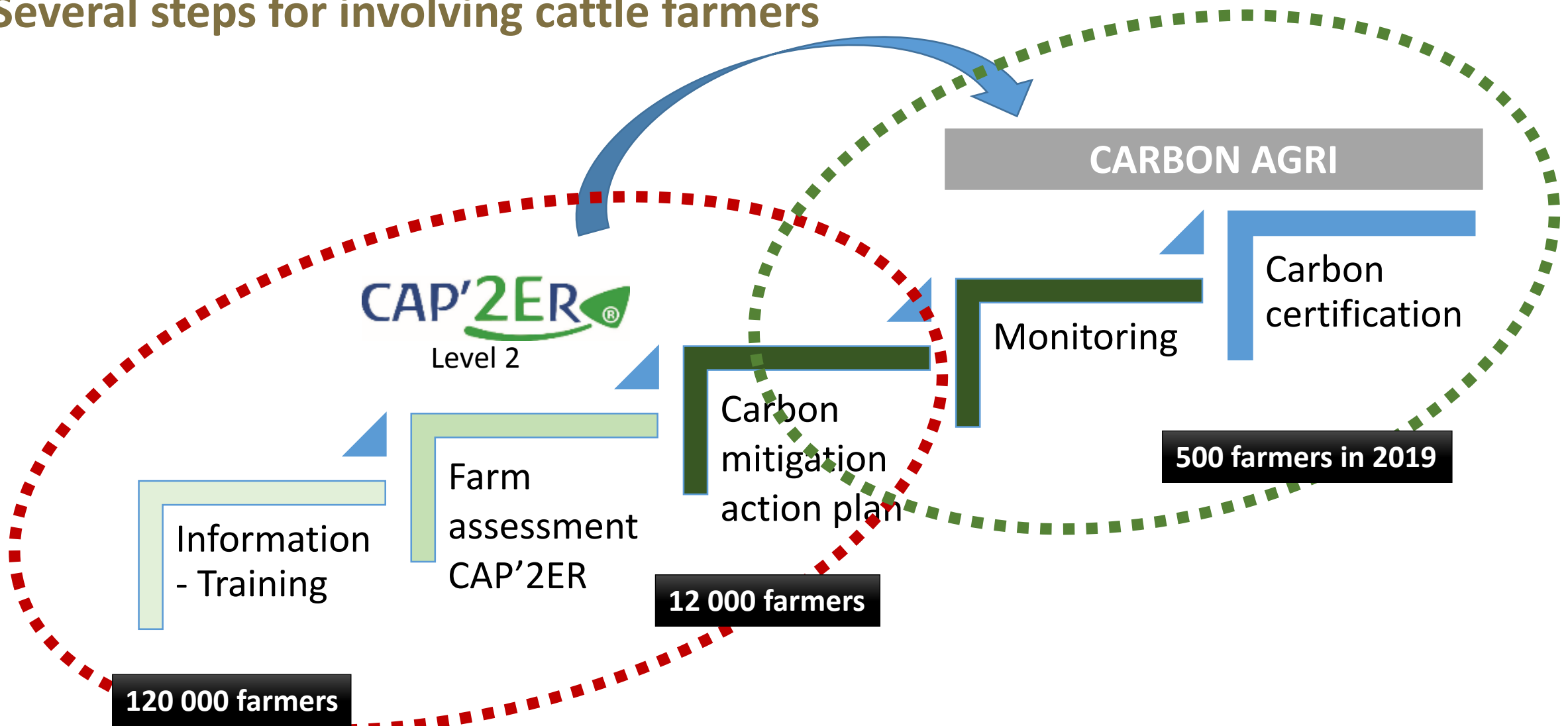
Décision du 30 septembre 2019

portant approbation d'une méthode pour le label « Bas-Carbone » intitulée « méthode de suivi des réductions d'émissions en élevages bovins et de grandes cultures conforme au label Bas-Carbone »

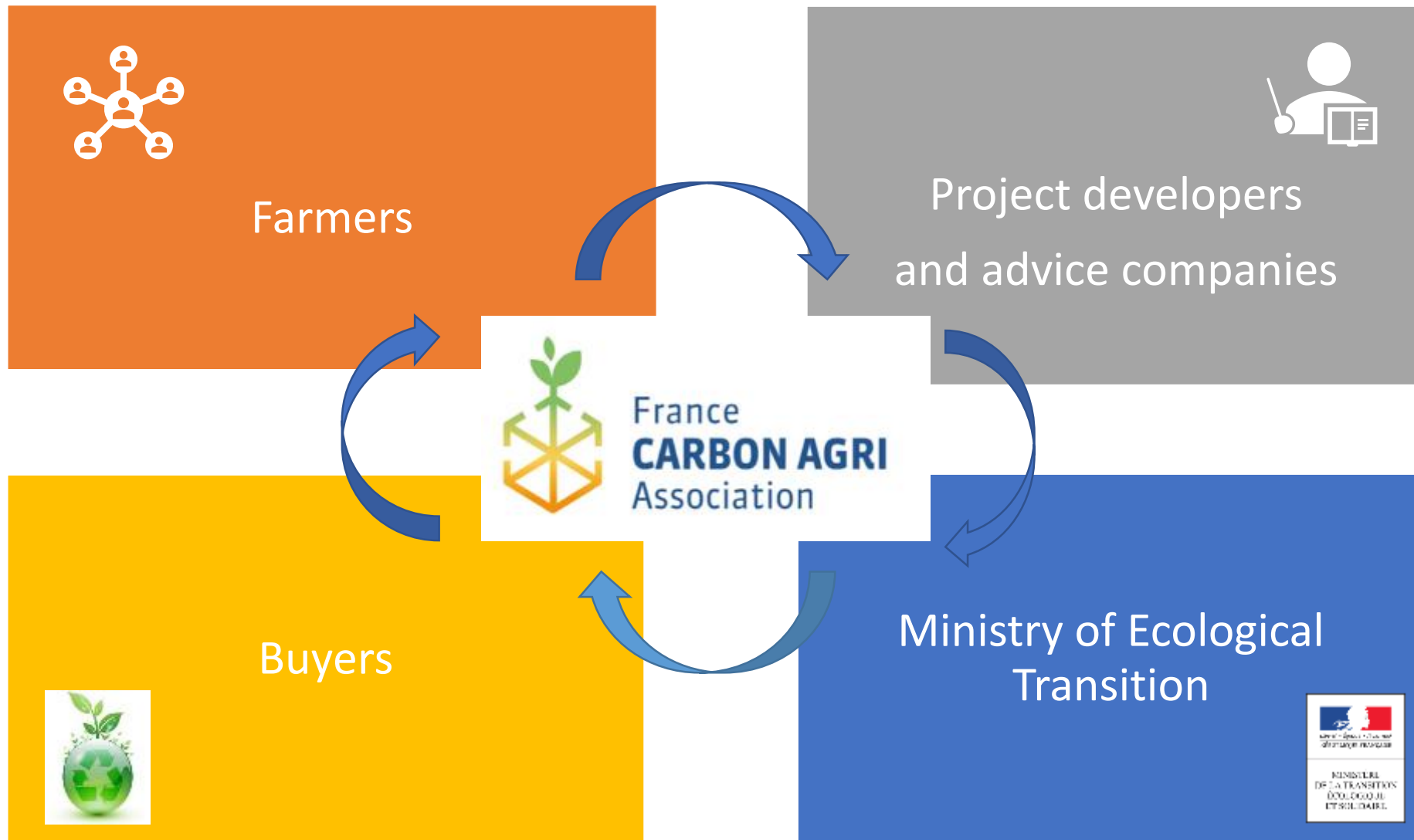
Carbon offset projects a driver for implementing mitigation practices



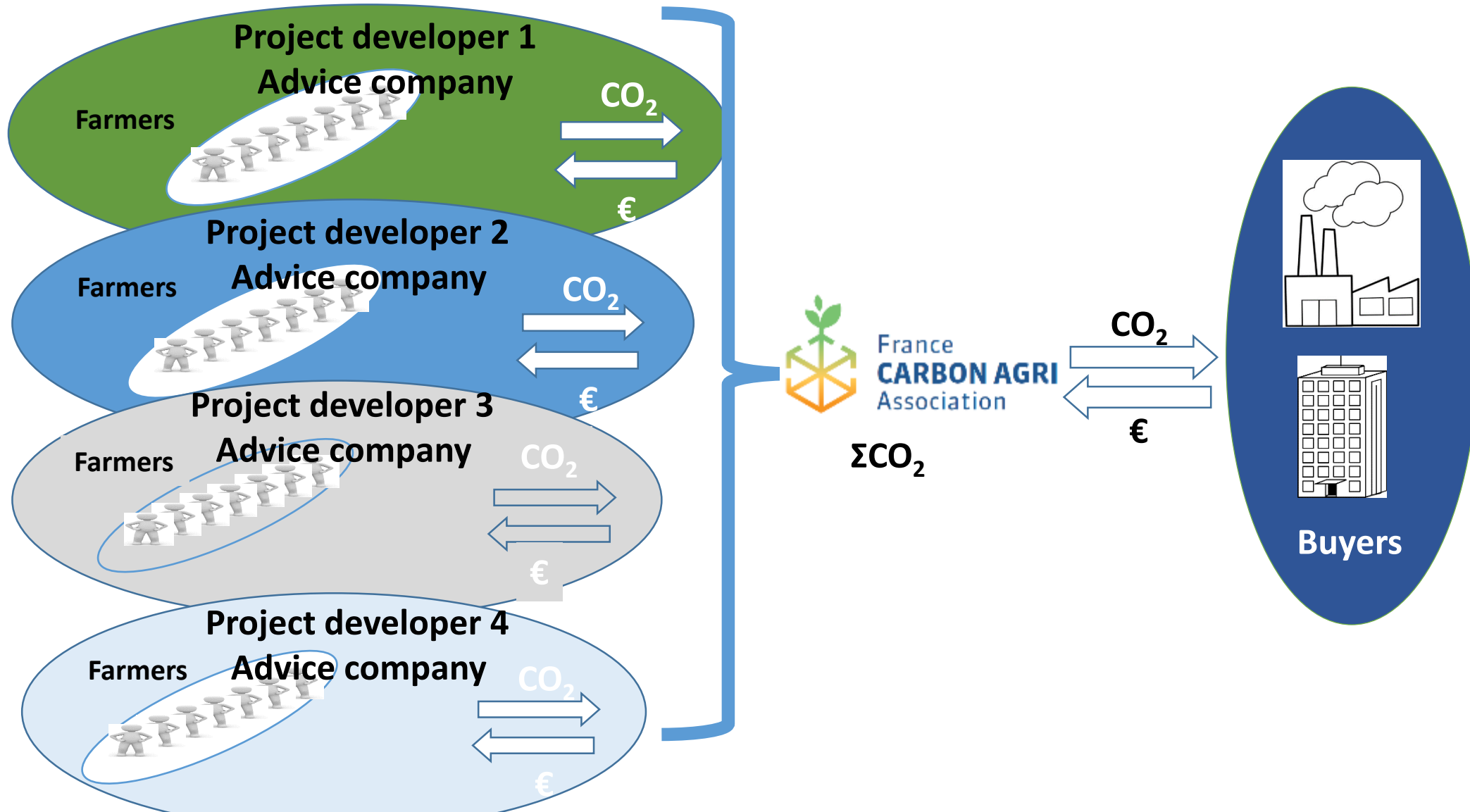
- Several steps for involving cattle farmers



Role of institutions involved in carbon offset projects



Role of institutions involved in carbon offset projects



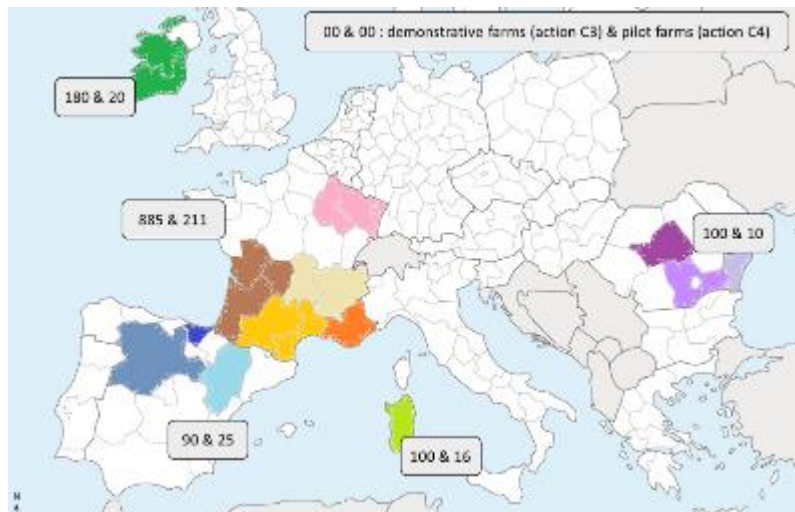
Transferability



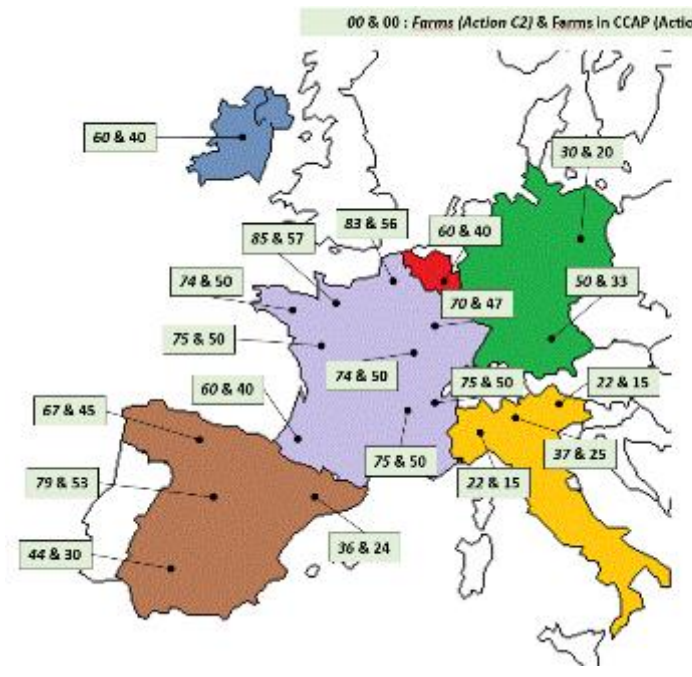
• LIFE BEEF CARBON 2014-2020



• EU LIFE GREEN SHEEP (GHG Mitigation – project submitted)



• EU LIFE SUSTAINABLE CATTLE (Carbon offset – project submitted)



Lessons learnt



- **Whole farm assessment, complex but crucial for avoiding burdens transfer and to looking for a sustainable action plan**
- **Carbon transition, a new opportunity in farm advising, but efforts have to be done to limit or support the implementation cost**
- **Efficiency improvement and payment for farmers, an opportunity to lever barriers in applying mitigation practices**
- **The environmental co-benefits represent a value for valorizing carbon credits and communication**
- **A need in better sharing methodologies and considering additional carbon sequestration**
- **France CARBON AGRI association, an opportunity to reduce engineering costs and to merge farmers, projects developers, advisers and buyers expectations**



Thanks for your attention

Jean Baptiste DOLLE

Jean-baptiste.dolle@idele.fr

French Livestock Institute - IDELE

Paris