



European Rural Networks'  
Steering Group

# Planned Network Activities

## Upcoming activities of the ENRD Evaluation Helpdesk

Hannes WIMMER, Team Leader

**8<sup>th</sup> Meeting of the European Rural Networks' Steering Group**  
Brussels, 23 October 2017



POWERED BY



# Our activities

**Improve the evaluation of EU RD policy**  
(≈Art. 52.2.d.)

1. Better evaluation methodologies and tools

- Guidance „Evaluation LEADER CLLD“ (Q3 2017)
- Guidance „Evaluation of innovation“ (Q4 2017)
- Guidance „Assessment RDP impacts“ (2018)
- Evaluation-related queries

2. Good practices in RD evaluation

- GWS no. 5: How to report on evaluation in AIR? (Q3)
- GWS no. 6. Evaluation and NRNs (Q4/2017)
- Good practice factsheets

3. Better evaluation capacity

- YCBE on follow-up of AIR in 2017 (Q4 2017)
- YCBE on evaluation of LEADER/CLLD (outstanding)
- Other training activities

4. Further developed M&E system

- Synthesis of evaluation components included in the AIR submitted in 2017 (Q4)

5. Well-organized evaluation related events

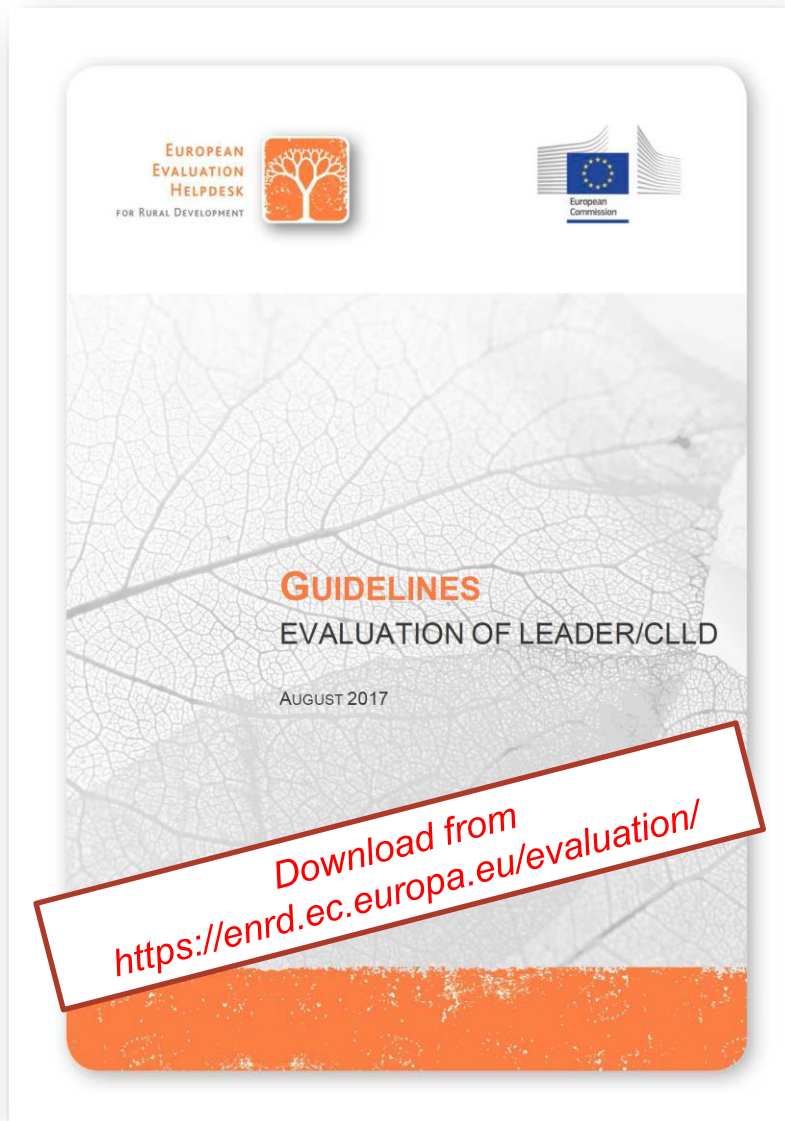
- Evaluation-related input for Expert Group meetings, ENRD events, NRN meetings, other events

6. Up to date communication on evaluation

- Rural Evaluation NEWS no. 8, 9, 10, 11
- Evaluation Helpdesk website <https://enrd.ec.europa.eu/evaluation/>

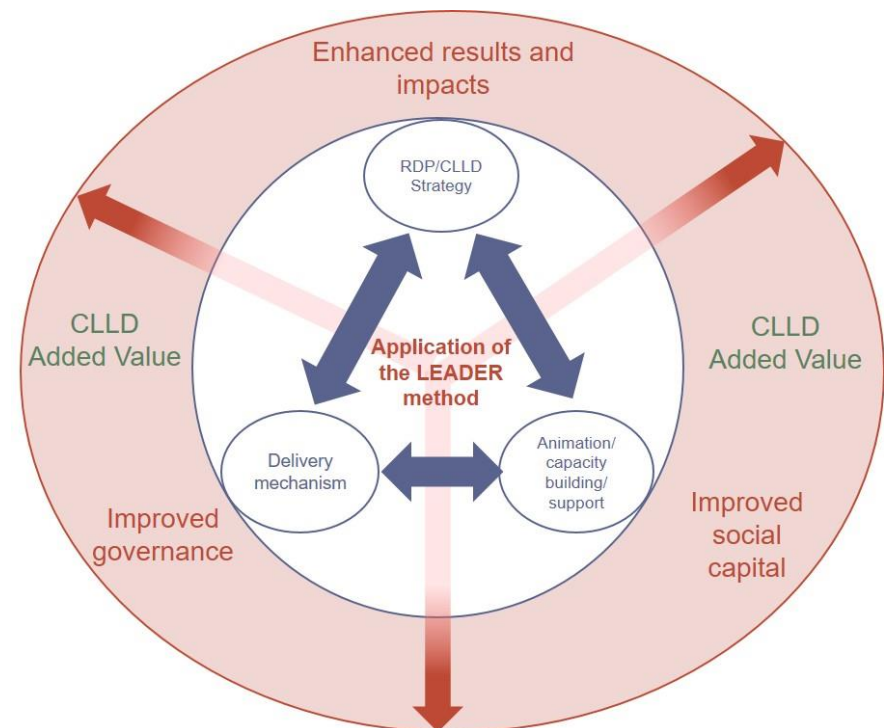


# Guidelines published



## “Evaluation of LEADER/CLLD“ (Q3 2017)

- Evaluation at RDP and LAG level
- Difference between evaluation and self-assessment, etc.



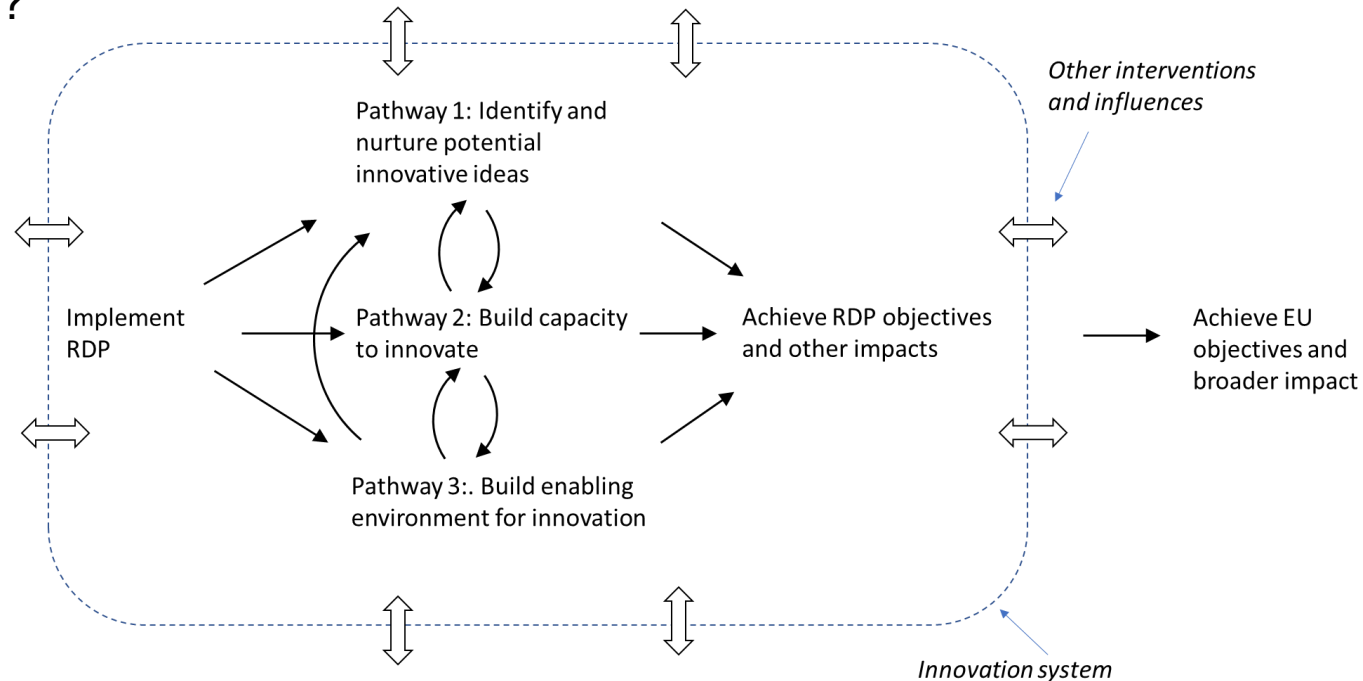


# Guidelines under preparation



## “Evaluation of innovation“ (Q4 2017)

- Why to evaluate innovation? What is the legal framework for the evaluation of innovation in RDPs? How can RDPs foster innovation?
- What are the evaluation practices in the Member States?
- How to answer the Common Evaluation Questions related to innovation?





# Guidelines under preparation



## “Assessment of RDP impacts in 2019“ (2018)

- How to assess the achievements and impacts of RDPs in 2019?
- How to assess the impact indicators?
- What are proposed methods for estimating the net effect of RD interventions?



# Good Practice Workshops

**Workshop #5 (19/20 September 2017 in Riga):** “How to report on evaluation in the Annual Implementation Reports: experiences and outlook”

**Workshop #6 (30 Nov./1 December 2017 in Athens):** Evaluation and National Rural Networks: How can NRNs support evaluation?”





# Yearly capacity building events (2017/2018)

Objective: Build evaluation capacities in the Member States

## TOPIC #1: “Follow-up of the Annual Implementation Reports in 2017: What are the stakeholders’ main lessons learnt from answering the Common Evaluation Questions?” (Q4 2017)

- What were strengths & weaknesses of the evaluation process in 2017?
- What follow-up is needed at the Member State level?
- What is the need for support in view of the AIR in 2019?

## TOPIC #2: Evaluation of LEADER/CLLD (outstanding)

- How to evaluate LEADER/CLLD at RDP and LAG level?



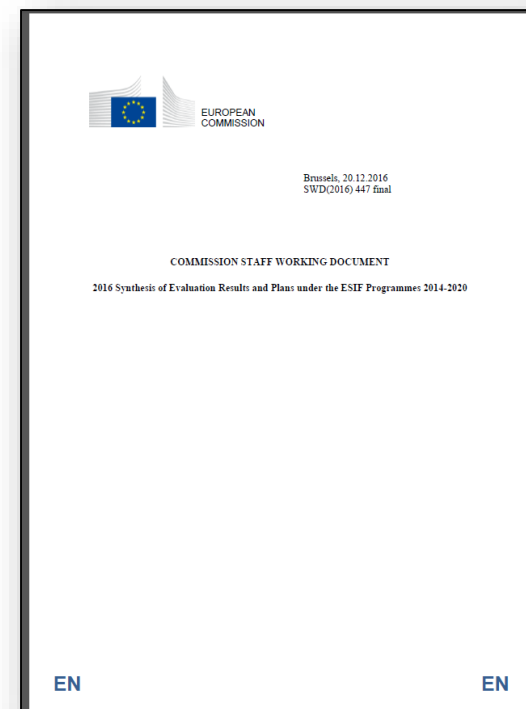
# Synthesis of evaluation components integrated in the AIR submitted in 2017 (Q3-4)

**Objective: Provide an overview of the achievements of EU rural development policy**

- Synthesize key information contained in the Annual Implementation Reports, chapter 2 and 7
- Show progress in implementing the Evaluation Plan, results achieved and answers to common evaluation questions #1-21

Outcome serves as input for [Strategic Reports](#) (hyperlink to 2016 documents):

- Commission Staff Working Document “Synthesis of Evaluation Results and Plans under the ESIF Programmes 2014-2020”
- Report from the EC to the EP, the Council, the European Economic and Social Committee and the Committee of the Regions “European Structural and Investment Funds 2014-2020 - Summary Report of the programme annual implementation reports.







# Questions

- Do the mentioned activities meet your needs?
- Are there any topics/needs that we should still consider?



# Thank you for your attention!

European Evaluation Helpdesk for Rural Development  
Boulevard Saint Michel 77-79  
B-1040 Brussels  
Tel. +32 2 7375130  
E-mail [info@ruralevaluation.eu](mailto:info@ruralevaluation.eu)  
<http://enrd.ec.europa.eu/evaluation>