

Rural Businesses – The Future is Now

ENRD Seminar

Using the RDPs to implement smart
business support packages

THE BASQUE RDP

Brussels, 30th March 2017

THE BASQUE COUNTRY



- **Surface:** 7.234 km² (4.918,69 rural)
- **Population:** 2.179.815 inhabitants (177.508 in rural areas)
- **Population density:** 301 inhab./km² (7-12 in some rural municipalities)
- **3 administrative areas** (Araba/Álava, Bizkaia & Gipuzkoa)
- **Unemployment rate (2016):** 12,5%
- **Activity rate (2016):** 56,4%
- **Economic sectors:** primary (0,83%); industry & energy (23,95%); building (6,16%) & services (69,06%)

- **85% municipalities are mountainous (disadvantaged zones)**
- **Urban / rural links**
- **Identity / culture / traditions linked to rural areas**
- **Entrepreneurial spirit**
- **Innovative territory**
- **+ 20 years experience in rural development – STRONG INSTITUTIONAL SUPPORT
– BOTTOM-UP APPROACH**

BASQUE GOVERNMENT

PROVINCIAL
GOVERNMENTS
&
MUNICIPALITIES

NETWORKING

FARMERS &
RURAL INHABITANTS

RURAL DEVELOPMENT
ASSOCIATIONS

MANAGEMENT
CENTRES & AGRICULTURAL SCHOOLS

CO-ORDINATION

MENDINET
LOCAL ACTION
GROUP

HAZI
FOUNDATION

Integral & Innovative Support

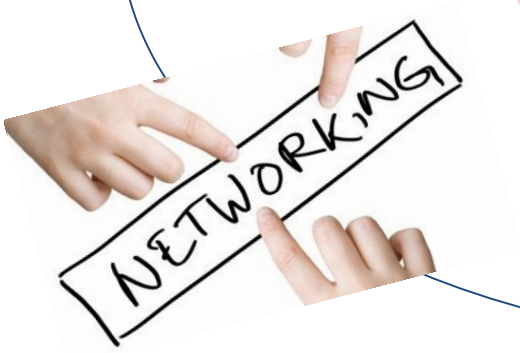
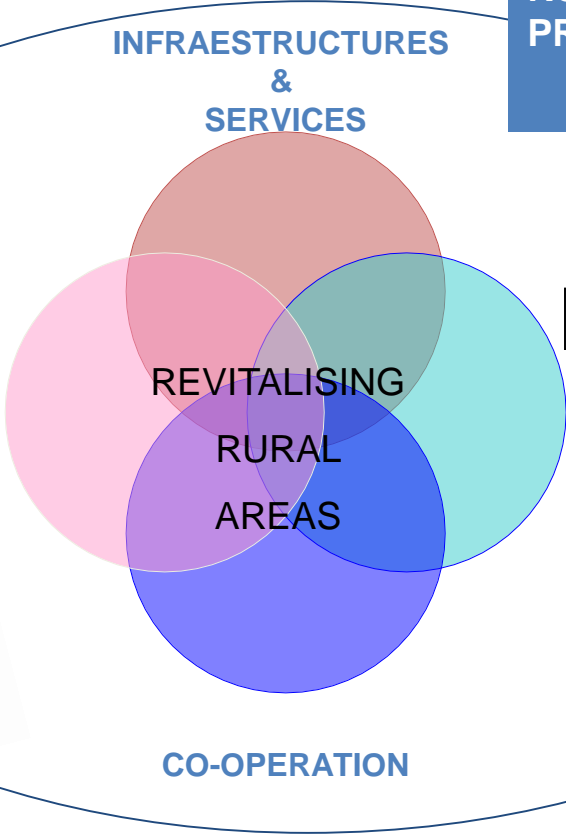
RURAL DEVELOPMENT PROGRAMME 2015-2020
291.955.741 €

Combining key RDP measures & creating synergies

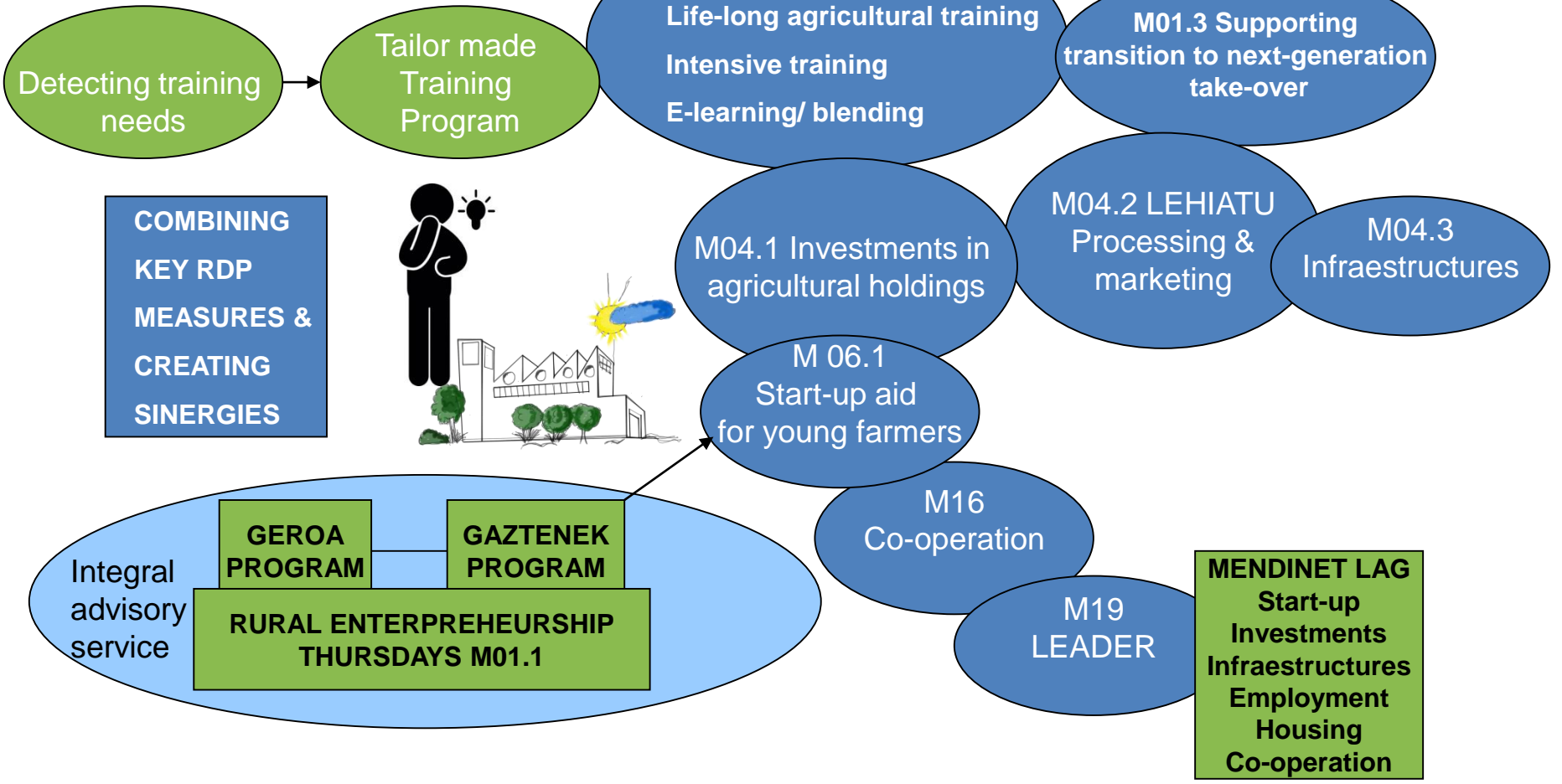
Support innovation & create businesses

TRAINING

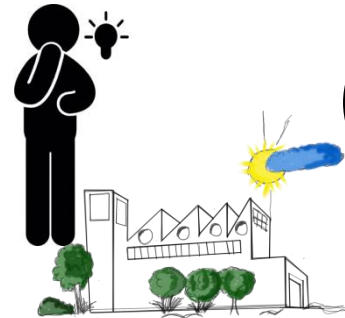
INVESTMENTS



Grants are a tool



**COMBINING
KEY RDP
MEASURES &
CREATING
SINERGIES**



Integral advisory service

GEROA PROGRAM	GAZTENEK PROGRAM
RURAL ENTERPREHEURSHIP THURSDAYS M01.1	

M01.1
Life-long agricultural training
Intensive training
E-learning/ blending

M01.3 Supporting transition to next-generation take-over

M04.1 Investments in agricultural holdings

M04.2 LEHIATU
Processing & marketing

M04.3
Infraestructures

M06.1
Start-up aid for young farmers

M16
Co-operation

M19 LEADER

MENDINET LAG
Start-up Investments
Infraestructures
Employment
Housing
Co-operation



hazi

LANDA, ITSASERTZ ETA ELIKAGAIEN SUSTAPENA
DESARROLLO RURAL, LITORAL Y ALIMENTARIO



RURAL ENTREPRENEURSHIP THURSDAYS



- Training & mentoring activities
- Peer-to-peer learning
- Supports the creation of business ideas & business plans
- Projects deserving start-up funding will be supported either by LEADER, M06 or other programs.

CONCLUSIONS

- The BC is an **innovative & entrepreneurial** territory
- Strong **institutional support** to revitalise rural areas
- **Networking, co-ordination & bottom-up** approach are key factors
- **Integral support** to innovate & create new businesses
- Different **measures of the RDP are combined** to make synergies
- Positive **results**:
 - Training for employment 2016: 5.506 participants. 6.333 h. 240 courses
 - GAZTENEK 2004-2014: 753 young people / 483 have set-up farms
 - GEROA: + 35 entrepreneurs/year



Jone Fernández Landa

www.hazi.eus

Mail: jfernandez@hazi.eus

