



2021
PORTUGAL.EU

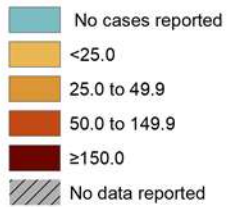


TerritorialAgenda

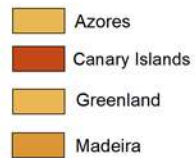
a future for all places, a future for rural areas



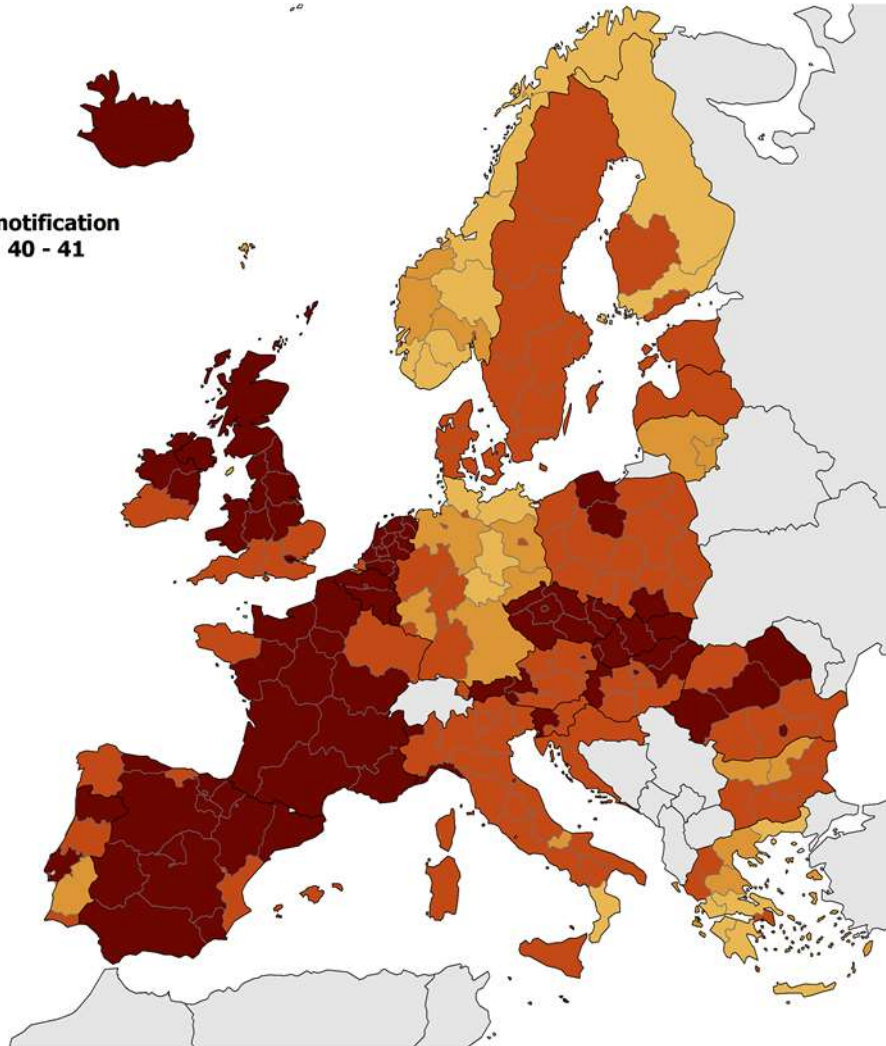
14-day COVID-19 case notification rate per 100 000 weeks 40 - 41



Regions not visible in the main map extent



Countries not visible in the main map extent



Administrative boundaries: © EuroGeographics © UN-FAO © Turkstat © Kartverket © Instituto Nacional de Estatística - Statistics Portugal.
The boundaries and names shown on this map do not imply official endorsement or acceptance by the European Union. ECDC. Map produced on: 15 Oct 2020

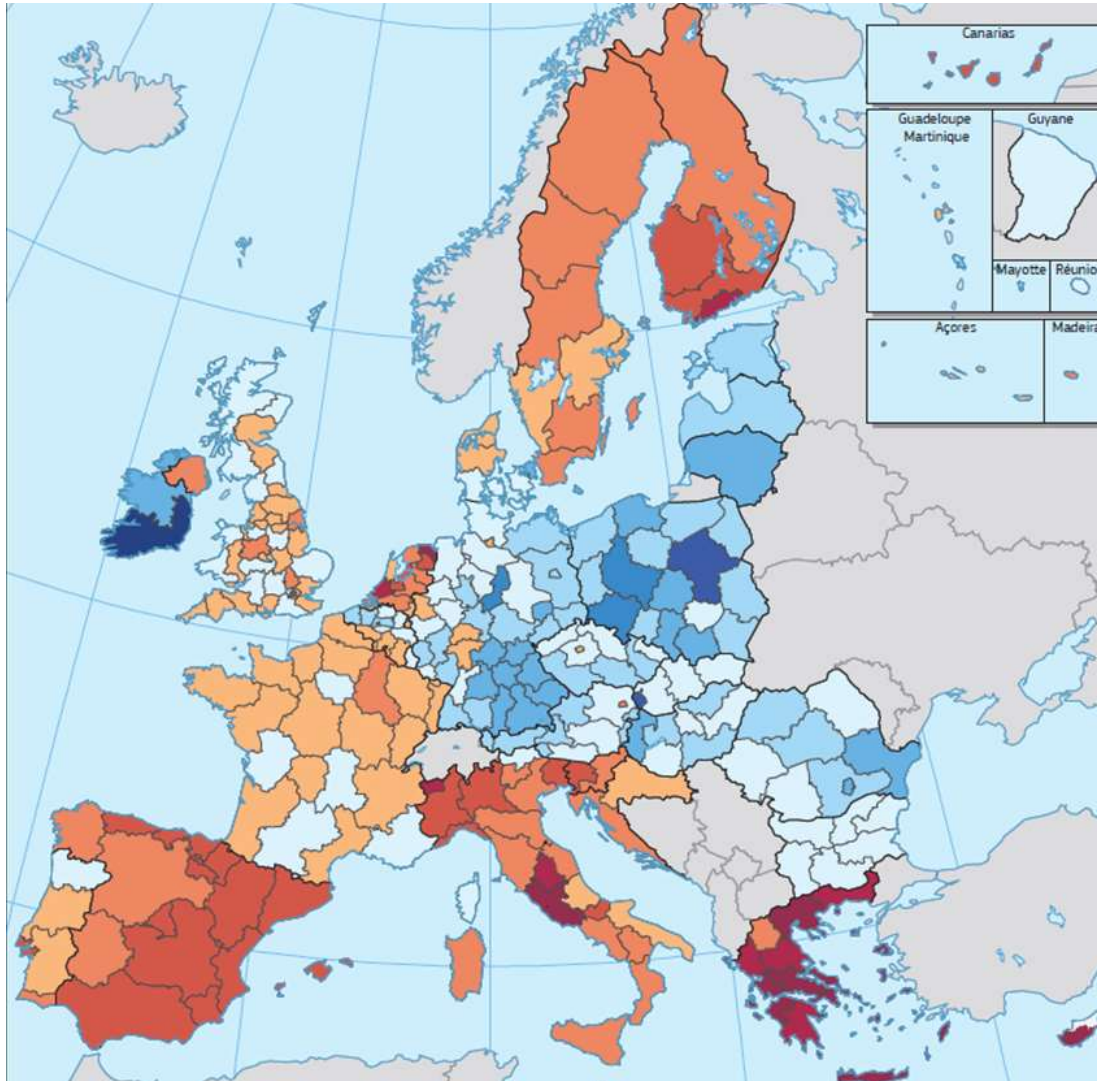
#TerritorialAgenda
A future for all places



Map of the present

COVID-19 Pandemia

Source: European Center for Disease Control, 15.10.2020



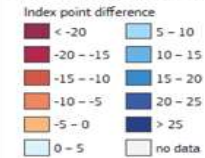
#TerritorialAgenda
A future for all places



Map of the past

7th cohesion report 2017

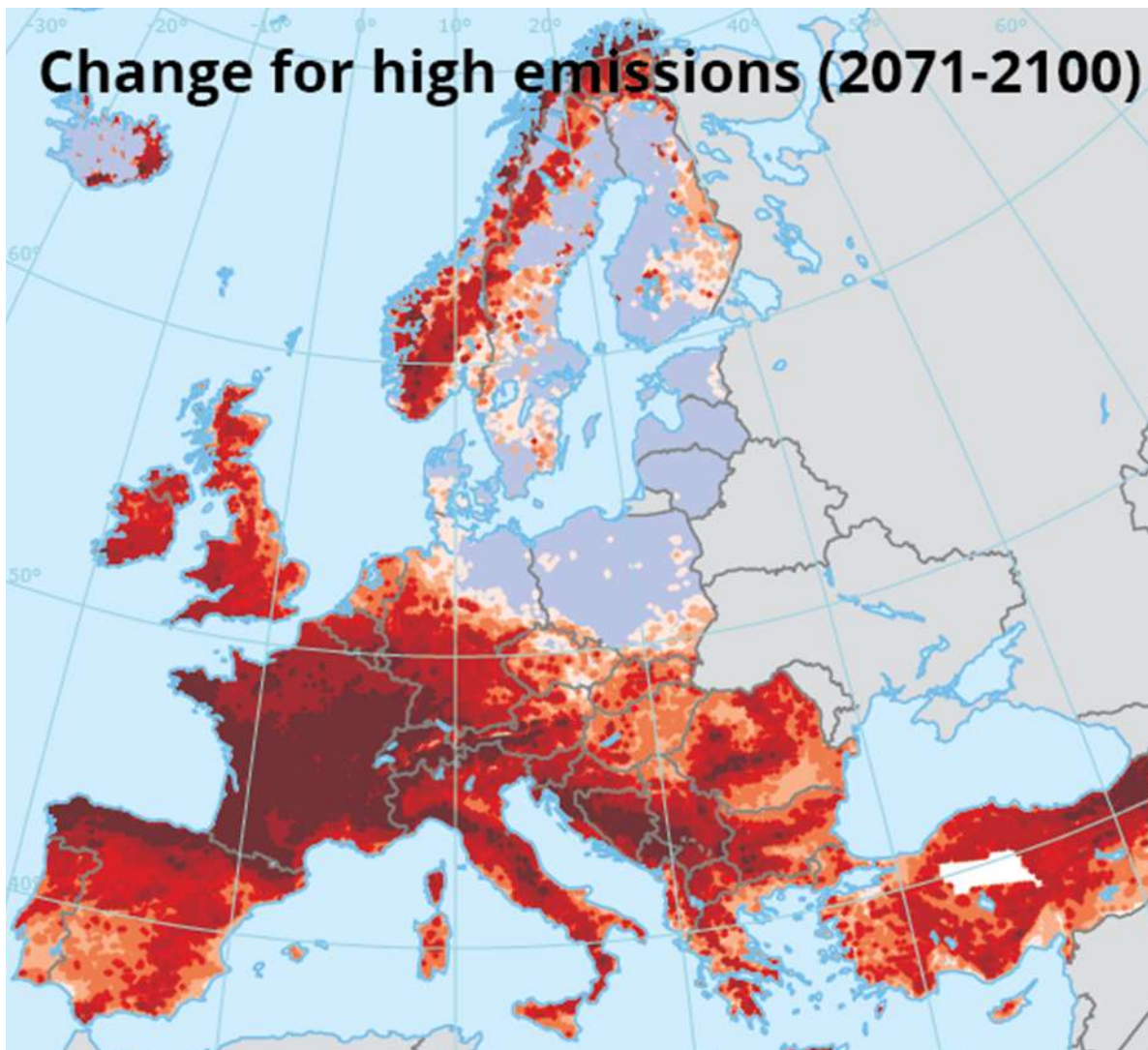
Map 2 Change in GDP per head index, 2008–2015



EU-28 = 0
Source: Eurostat, DG REGIO

Source: European Commission, 7th report on economic, social and territorial cohesion, 2017

Change for high emissions (2071-2100)



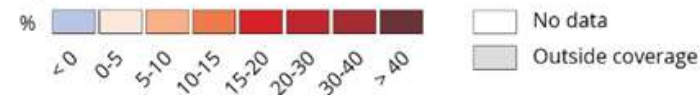
#TerritorialAgenda
A future for all places



Map of the future

Climate change scenario

Projected change in fire weather index



Source: European Environment Agency, 03.12.2019



#TerritorialAgenda
A future for all places



- # People and places drifting apart
- # Climate change
- # Demographic and societal imbalances
- # Loss of biodiversity and land consumption
- # Air, soil and water quality
- # Digitalisation & 4th industrial revolution
- # Secure, affordable and sustainable energy
- # Just Transition
- # Circular regional value chains
- # Landscape and natural and cultural heritage



#TerritorialAgenda

A future for all places

#TerritorialAgenda
A future for all places



- # People and places drifting apart
- # Climate change
- # Demographic and societal imbalances
- # Loss of biodiversity and land consumption
- # Air, soil and water quality
- # Digitalisation & 4th industrial revolution
- # Secure, affordable and sustainable energy
- # Just Transition
- # Circular regional value chains
- # Landscape and natural and cultural heritage



#TerritorialAgenda
A future for all places

#TerritorialAgenda
A future for all places



A Just Europe
A Green Europe



A Just Europe
that offers future perspectives
for all places and people

#TerritorialAgenda
A future for all places



BALANCED EUROPE

Better balanced territorial development
supported by Europe's diversity

FUNCTIONAL REGIONS

Convergent local and regional development,
less inequality between places

INTEGRATION BEYOND BORDERS

Easier living and working across national borders



A Green Europe
that protects common livelihoods
and shapes societal transition

#TerritorialAgenda
A future for all places



HEALTHY ENVIRONMENT

Better ecological livelihoods, climate-neutral and resilient towns, cities and regions

CIRCULAR ECONOMY

Strong and sustainable local economies in a globalised world

SUSTAINABLE CONNECTIONS

Sustainable digital and physical connectivity of places



Every player can take action in the context of its regular mandate

#TerritorialAgenda
A future for all places



INTERGOVERNMENTAL COOPERATION
all players are in charge

Local and regional levels

Cross-border, transnational, inter, intra-regional

Member States and neighboring countries, EU

PLACE-BASED APPROACH
all sectors are in charge

Sector policy impacts

Multi-level governance

Cooperation between territories



What's in it for me?

#TerritorialAgenda
A future for all places



STRATEGIC TERRITORIAL FOCUS

The spatial lens provides a strategic framework for the combination of challenges, capacities and potential specific to each place

BETTER GOVERNANCE

Territorial approaches strengthen governance structures and cultures, boosting capacities, particularly at local level

BREAKING SILOS

Cross-cutting issues viewed beyond single sectors, allow for more integrated, sound and sophisticated responses and for increased combinations of multilevel partnerships and multi-funding solutions

INNOVATION AND EXPERIMENTATION

Experimental approaches are mostly needed to address territorial challenges and to find innovative solutions to complex problems



Take inspiration and inspire other

#TerritorialAgenda
A future for all places



#PILOT ACTIONS

Test and develop practices and demonstrate how the territorial dimension of regional, national and European policies can be actively addressed

#INSPIRING EXAMPLES

52 Examples collected on territorial approaches in policy design and deliver

Want to know more about this? Visit
www.territorialagenda.eu

A satellite-style map of Europe and the Mediterranean region, showing various geographical features like mountains, rivers, and coastlines. The colors range from dark blue for the oceans to green and brown for landmasses.

#TerritorialAgenda

A future for all places

www.territorialagenda.eu

Elisa Vilares
Portuguese Ministry of Environment and Climate Action
evilares@dgterritorio.pt