



European  
Commission

# Cooperation under LEADER

## Overview of the implementation framework and key changes in relation to the previous period

Karolina JASINSKA-MÜHLECK  
DG Agriculture and Rural Development  
H. 1 Consistency of rural development



Agriculture  
and Rural  
Development

# Some facts and new context

- Drop in share of LAGs involved in TNC
- Expenditure on TNC below planning
- Recommendations made by an ENRD Focus Group
- New opportunities

# What we aimed at?

- More support to LAGs  
(preparatory actions, roles of Networks, opening to other funding sources)
- More flexibility in delivery  
(selection of TNC by LAGs, no delays in selection, eligibility left as much as possible to local level, no excessive details, opening to other areas and countries)
- More harmonised and transparent rules  
(published early enough, easy to apply, shared rules encouraged)

# New framework (1)

- Programming
  - ⇒ Cooperation obligatory in RDP
  - ⇒ Facultative for LAGs
  
- Eligibility
  - ⇒ Partner: (i) a group of local public and private partners
    - (ii) implementing a LDS
    - (iii) rural or urban area
    - (iv) within EU or outside (limited to rural)
  - ⇒ LAG can be project beneficiary
  - ⇒ Common costs can be covered



# New framework (2)

- Preparatory actions
  - ⇒ Obligatory, description of eligible costs should not be too restrictive
  - ⇒ LAG has to demonstrate it envisages a concrete project
  - ⇒ Eligible, even if no implementation
- Cooperation project
  - ⇒ Has to be a concrete activity with clearly identified deliverables or outputs
  - ⇒ Can cover capacity building or transfer of experience
  - ⇒ Eligibility criteria and costs to be defined in the RDP or by LAGs, according to the selection system chosen

# New framework (3)

- Projects' selection
  - ⇒ Recommended separate procedure for preparatory support, if selection by MA
  - ⇒ Ideally selected by LAGs, budget allocated to the LDS
  - ⇒ If made by MA, at least 3-4 calls per year, selection within 4 months from application
  - ⇒ MA to communicate selection rules and list of eligible costs within 2 years from the date of the approval of the RDP
  - ⇒ MA have to communicate the approved projects via SFC
  
- National Rural Networks
  - ⇒ Should facilitate co-operation among LAGs

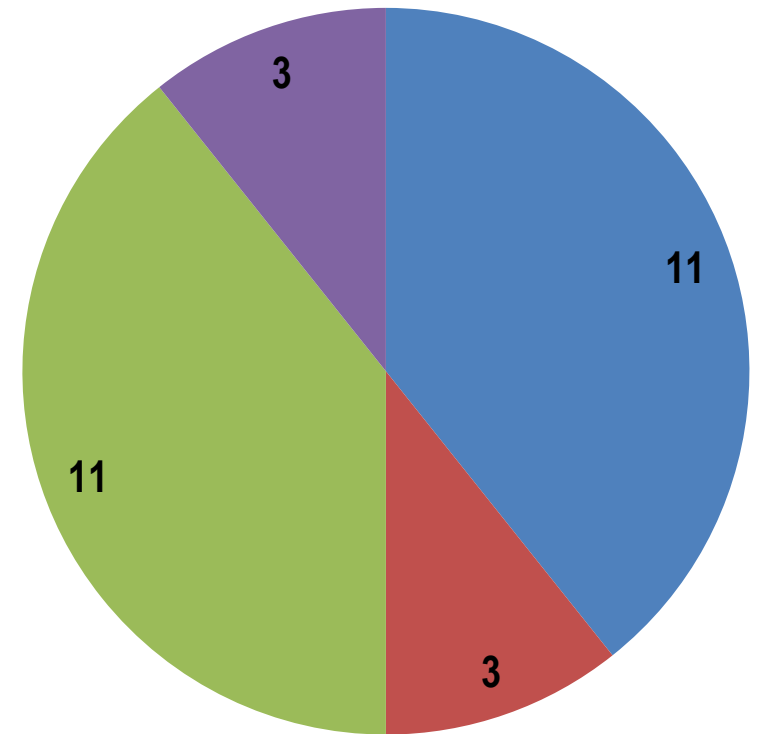
# Key changes

- Obligatory preparatory support
- Eligibility conditions less restricting (actions, areas, partners)
- Selection by MA to be understood as exception to the rule, common rules imposed
- LAGs explicitly allowed to co-operate with partners in other types of areas
- MA advised to use the same rules for ERDF and ESF
- Explicit possibility for LAGs to implement cooperation projects under cross-border ETC

## Funds supporting CLLD across MS

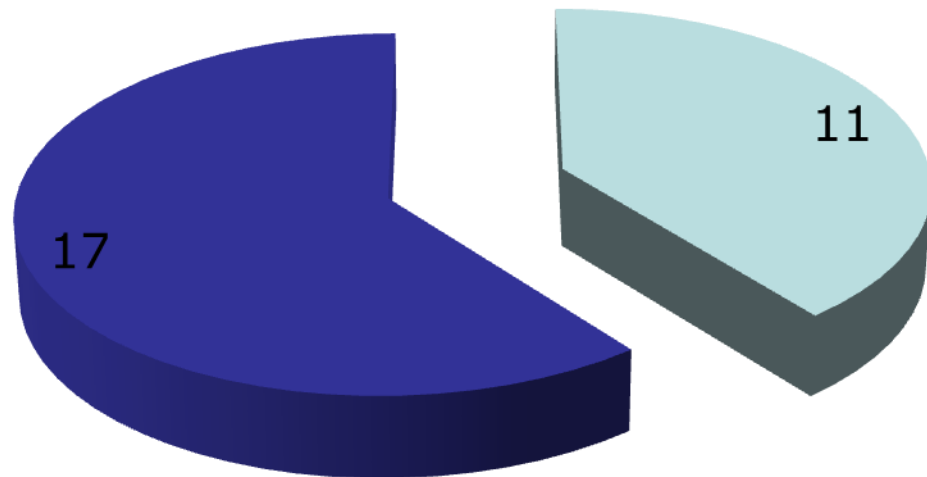
EAFRD, ERDF, ESF and EMFF	BG, DE, ES, FR, GR, IT, PL, PT, RO, SE, UK
EAFRD, ERDF and ESF	CZ, HU
EAFRD, ERDF and EMFF	SI
EAFRD and ERDF	AT, SK
EAFRD and EMFF	CY, DK, EE, FI, HR, IE, LT, LV
EAFRD and ESF	NL (possibly)
EAFRD only	BE, LU, MT

■ 4 Funds ■ 3 Funds ■ 2 Funds ■ 1 Fund





## Member States with CLLD possible also in urban areas:



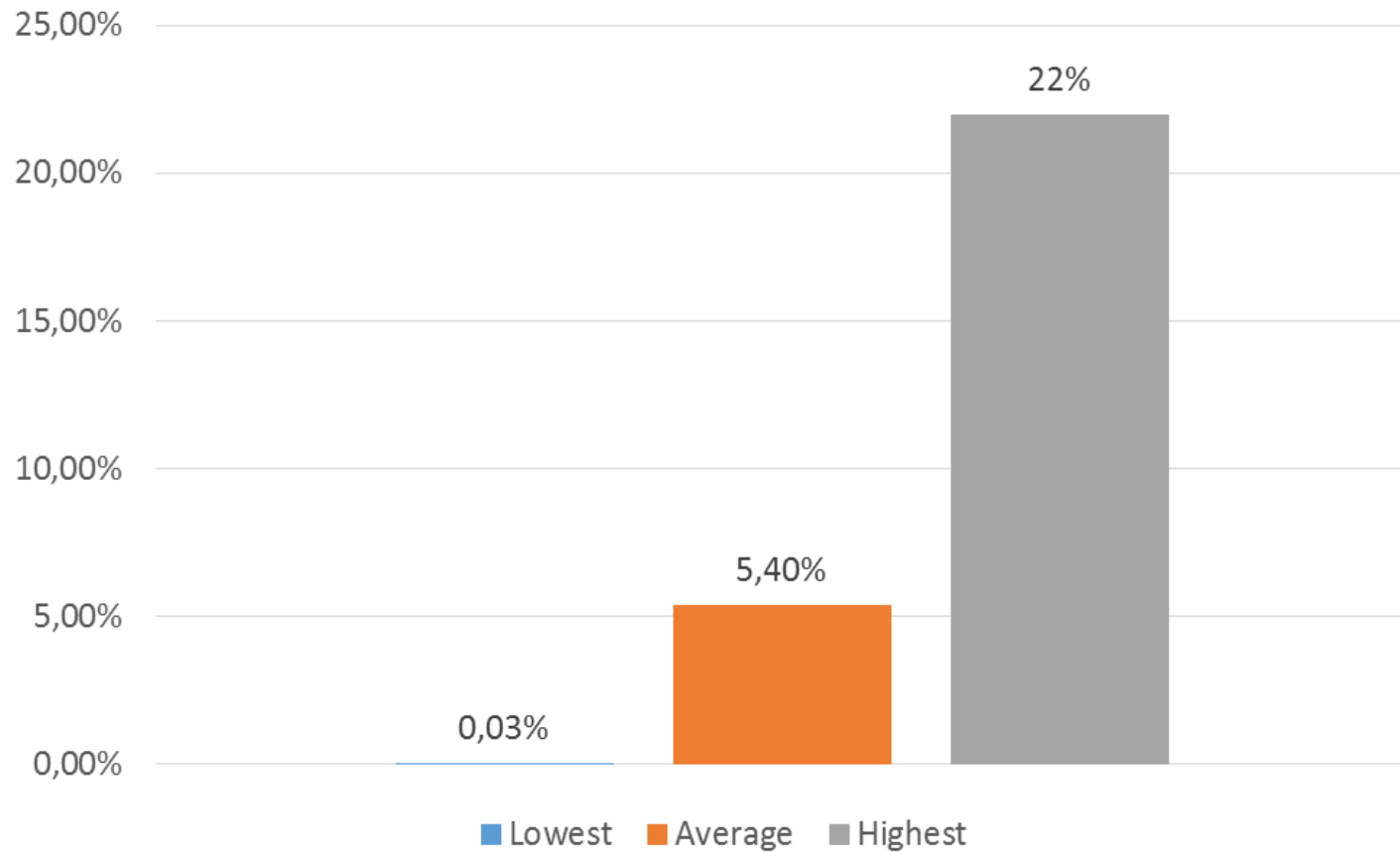
- Also urban areas:  
ES, FI, GR, HU,  
LT, NL, PL, PT,  
RO, SE, UK
- Only rural and  
fisheries areas

# From the screening of RDPs

- Many RDPs where projects selected by LAGs
- In some cases, both MA and LAGs involved
- Focus on LDS, demonstrate value added
- Some restrictions in term of the upper limits for preparatory support and cooperation project

# Cooperation budget

M19.3 share of M19 budget



## Cooperation budget as a share of the budget for LEADER

Data for 69 RDPs approved at the 24.08.15

M19.3 share of M19 budget, for regionalized country the average between the RDPs approved is given		Regional RDPs		
		Higher	Lower	MS RDPs approved
LU_National	22.0%			
LV_National	11.6%			
BE_cumulative	7.7%	9.7%	5.6%	2/2
SI_National	7.6%			
Uk_cumulative	6.5%	11.6%	0.9%	3/4
IT_cumulative	6.4%	20.1%	1.6%	10/22
FR_cumulative	6.2%	16.1%	1.7%	8/28
HR_National	6.0%			
NL_National	5.8%			
SK_National	5.7%			
PT_cumulative	5.7%	7.6%	4.5%	3/3
DE_cumulative	5.5%	18.5%	0.4%	13/13
FI_cumulative	5.4%	7.7%	3.0%	2/2
BG_National	4.9%			
CZ_National	4.6%			
IE_National	4.0%			
SE_National	3.7%			
AT_National	3.2%			
HU_National	3.2%			
ES_cumulative	3.1%	11.3%	0.7%	11/18
RO_National	2.6%			
LT_National	2.5%			
PL_National	2.0%			
EE_National	1.4%			
DK_National	0.03%			12

# Thank you!

[karolina.jasinska@ec.europa.eu](mailto:karolina.jasinska@ec.europa.eu)